

GAS PIPES



SICURFLEX Stainless Steel Pipes

Easily shapeable stainless steel pipes with yellow PE coating. The pipes are intended for indoor gas piping, overpressure 0.5 bar max.

They are supposed to be cut to the desired length on site. They are easily flexible, with bends replacing pipe elbows.

Certified to EN 15266:2008.

TECHNICAL DATA

PIPE MATERIAL	AISI 316L (1.4404)
NUT MATERIAL	brass
GASKET	NBR
PIPE WALL THICKNESS	0.3mm
COATING THICKNESS	0.5mm
WORKING TEMPERATURE	0 °C to +60 °C
MAX. WORKING OVERPRESSURE	0.5 bar

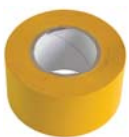
DIMENSIONS AND TYPES

	Inner diam. [mm]	Outer diam. [mm]	Min. bend diam. [mm]	Union nut size	Tightening torque [nm]	Pipe code 1 pc - 4 m	Pipe code - by meter	Nut+ gasket code	Gasket code
Trubka DN 12	12.0	15.8	25	1/2"	40	13459	13460	13634	14090
Trubka DN 15	15.7	20.0	25	3/4"	50	13461	13462	13635	14091
Trubka DN 20	19.7	25.0	30	1"	50	13463	13464	13636	14092

ACCESSORIES

Protective Yellow Duct Tape - code: 13940

Intended for protection of uninsulated pipe sections, nuts and fittings against chemical and electrical corrosion and mechanical damage.



Gas pipe installation shall be done by qualified staff only.

WATER AND SOLAR PIPES



KOMBIFLEX Stainless Steel Pipes

Easily shapeable pipes made of stainless steel are intended for fixed pressure connections for domestic and drinking water. Kombiflex is suitable for connections of storage water heaters, boilers, radiators, water outlets, dishwashers and wherever quick installation and flexibility is an advantage. When used for hot water distribution or run in a wall, or for solar thermal systems, it is advisable to add insulation or use pre-insulated pipes. The pipes are cut to the desired length on the spot, elbows are replaced by pipe bends.

TECHNICAL DATA

PIPE MATERIAL	AISI 304
NUT MATERIAL	nickel plated brass
PIPE WALL THICKNESS	0.22
WORKING TEMPERATURE	-20 °C to +120 °C
MAX. WORKING OVERPRESSURE	16 bar (up to DN 20) / 6 bar (DN 25)





Certified for drinking water.

DIMENSIONS AND TYPES

	Inner diam. [mm]	Outer diam. [mm]	Min. bend diam. [mm]	Union nut size	Code					Nut+gasket code	Gasket code	Teflon gasket code	Suitable insulation DN _a *
					2 m	4 m	20 m	30 m	by meter				
DN 8	8.1	11.7	24	3/8"	3713					769	5667	9976	DN _a 13
DN 12	13	16.8	34	1/2"		3093		16959	4654	770	5553	9977	DN _a 18
DN 16	15.7	20	40	3/4"		3094		16960	4655	771	5554	9978	DN _a 22
DN 20	19.7	25	50	1"		3267		16961	4656	3343	5668	9980	DN _a 28
DN 25	26.5	33	66	5/4"			16962		3379	3344	6799	9981	DN _a 35

* DN_a means the insulation hole diameter

ACCESSORIES FOR PREPARING KOMBIFLEX AND SICURFLEX PIPES

		CODE
	Pipe cutter for DN 8 to DN 20 pipes	713
	Tube template rammer, DN 8 to DN 20	3430
	Tube template rammer, DN 25	7596
	Kombiflex clamp, 1/2", 3/4"	720
	Kombiflex clamp, 3/8", 1"	3659
	Kombiflex clamp, 5/4"	7597
	Sicurflex clamp, 1/2", 3/4"	13939
	Sicurflex clamp, 1/2", 1"	14088
	Sicurflex clamps are different from Kombiflex ones and are marked GAS.	
	Tool Case - contains a pipe cutter, two twin Kombiflex clamps, tube template rammer and 4x 10 nickel-plated union nuts with gaskets.	3834

Nipples with enlarged sealing surface area

In order to secure good tightness, the pipes shall be connected to nipples with sufficient sealing surface area (wall thickness) only.



NIPPLES WITH ENLARGED SEALING SURFACE AREA

	Code
3/8" M	6972
1/2" M	6971
3/4" M	6970
1" M	6969
5/4" M	6973

REDUCING NIPPLES WITH ENLARGED SEALING SURFACE AREA

	Code
1/2" x 3/8" M	6968
3/4" x 1/2" M	6965
1" x 3/4" M	6967
5/4" x 3/4" M	8270
5/4" x 1" M	6966
6/4" x 1" M	8766
6/4" x 5/4" M	8767

Wall Mount Pipe Clamps, M8 screw, screw and dowel included

PIPE	Code
DN 12 pipe	14160
DN 20 pipe	14162

