



www.regulus.eu



COOLING KIT

Installation and Operation Manual
RegulusHBOX 212 RTC Cooling Kit

EN

COOLING KIT

Table of Contents

A. GENERAL INFORMATION	3
A1. Safety instructions	3
A2. Description, application	3
A3. Components	3
A4. Hydraulic connection diagram	4
B. INSTALLATION, CONNECTIONS	5
B1. Initial state	5
B2. Preparing BOX	5
B3. Preparing Cooling kit	6
C. ASSEMBLY	8

A. GENERAL INFORMATION

This Manual is an integral part of the product. Read this Manual before starting any intervention and keep it in a place accessible at all times. If you lose the manual, you can download the current version in pdf format from the website www.regulus.eu

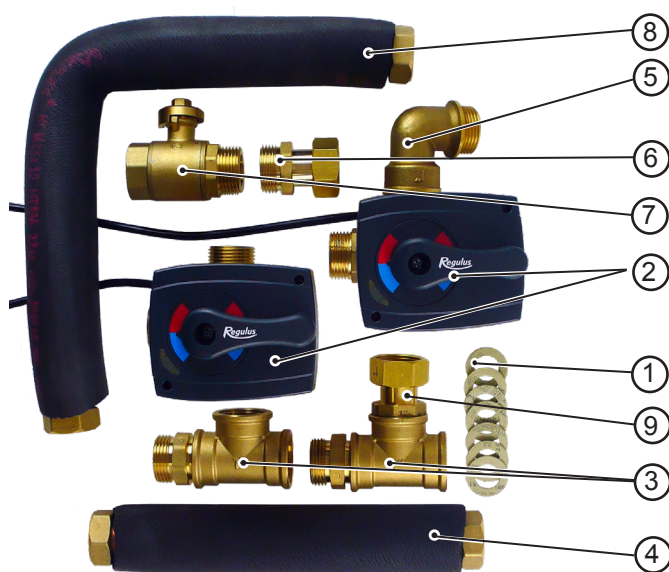
A1. SAFETY INSTRUCTIONS

- **This appliance should only be used by persons who have been properly instructed in the safe use of the appliance and understand the risks involved. The appliance should not be used by children and persons with limited physical, sensory or mental abilities or with insufficient experience and knowledge. It is expressly forbidden for children to play with the appliance!**
- **The hydraulic connection of the RegulusHBOX 212 RTC indoor unit must be carried out by a qualified person in accordance with applicable standards and regulations.**
- **Only persons with electrical qualifications are allowed to remove the electrical installation cover.**
- All electrical installation work must be carried out by a qualified person, in accordance with these instructions and applicable standards and regulations.
- Do not tamper with the internal electrical installation of the RegulusHBOX 212 RTC indoor unit, which is made at the factory.
- **Before starting work on the electrical installation, it is necessary to disconnect the RegulusHBOX 212 RTC indoor unit from power!**
- **The controller integrated in the RegulusHBOX 212 RTC indoor unit does not replace any safety elements of the heating system or hot water heating system in any way.** These safety elements must be installed in accordance with applicable standards and regulations. Carry out the installation according to the design and ensure that all prescribed safety elements are fitted.
- The controller settings and connection of optional accessories must be carried out in accordance with the instructions given in this manual.

A2. DESCRIPTION, APPLICATION

The RegulusHBOX 212 RTC cooling kit - code **21100** (hereinafter the Cooling Kit) is used to expand the system with active cooling using the RTC heat pump.

A3. COMPONENTS

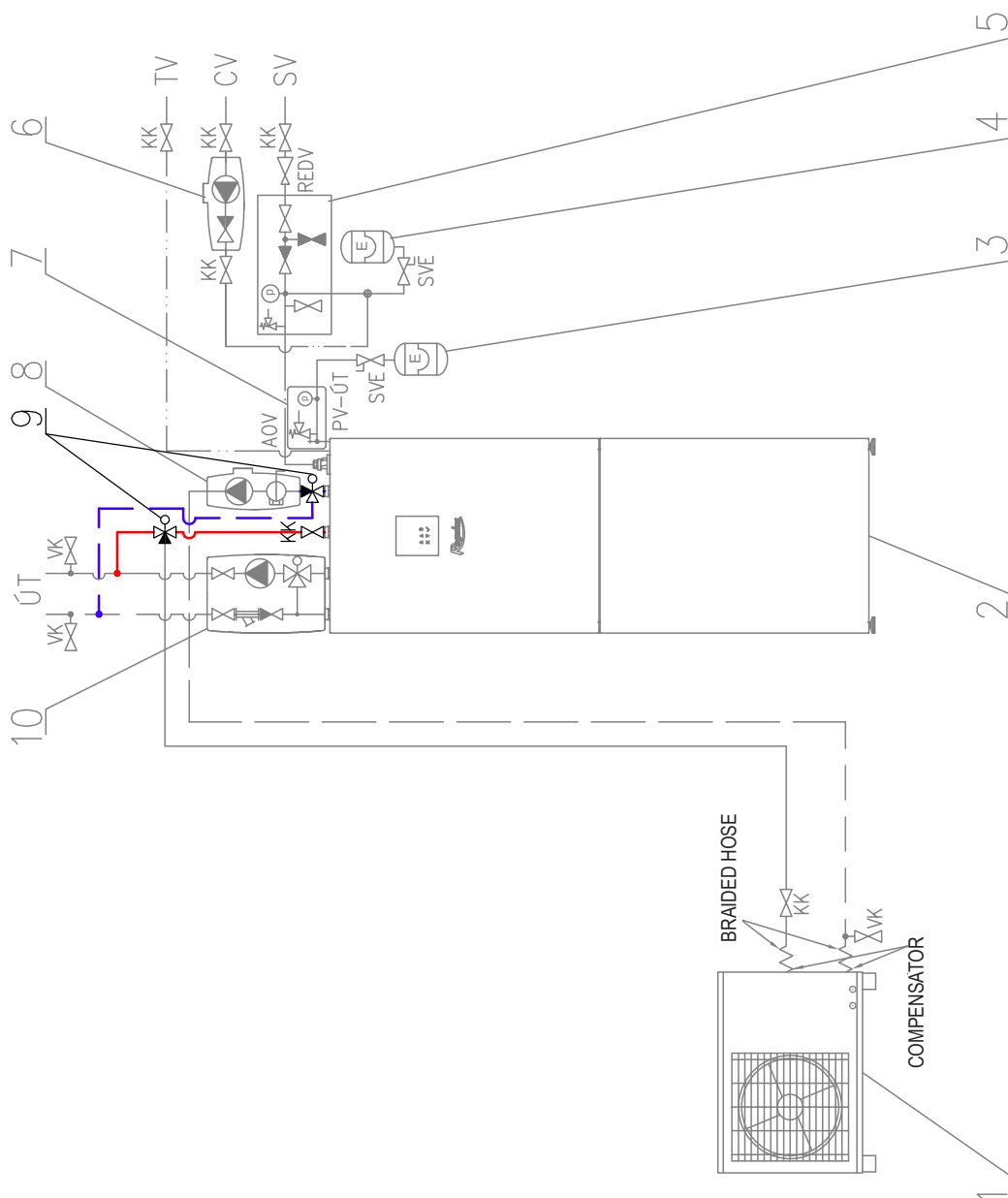


Pos.	Name	Code
1	Gasket	5668
2	3-way valve w. actuator	21101 + 17176
3	T-piece w. hex nipple	15184 + 6969
4	Supply piping	21049
5	3-way valve w. actuator, elbow	21101 + 17176 + 8395
6	Union	15695
7	Ball valve	17561
8	Return piping	21048
9	T-piece w. hex nipple and union	15184 + 6969 + 15695
-	Aerotape insulation	6450

A4. HYDRAULIC CONNECTION DIAGRAM

KEY

- 1 – Regulus RTC heat pump
 - 2 – HBOX 212 RTC indoor unit
 - 3 – additional heating system expansion vessel (optional – integrated 12l one is included)
 - 4 – DHW expansion vessel (optional)
 - 5 – safety kit for heater
 - 6 – pump station for DHW recirculation – CSE TV ZV (optional)
 - 7 – safety group for heating system
 - 8 - pump station for heat pump
 - 9 - VZK three-way zone ball valve
 - 10 – pump station for heating system
-
- SV – cold water
 - TV – hot water
 - CV – hot water recirculation
 - UT – central heating (heating system)
-
- KK – ball valve
 - ZV – check valve
 - AOV – automatic air vent valve
 - REDV – pressure reducing valve (optional)
 - VK – drain valve
 - SVE – expansion vessel service valve
 - PV-UT – safety valve for heating system
 - MFB – Magnet Filterball






B. INSTALLATION, CONNECTIONS

B1. INITIAL STATE



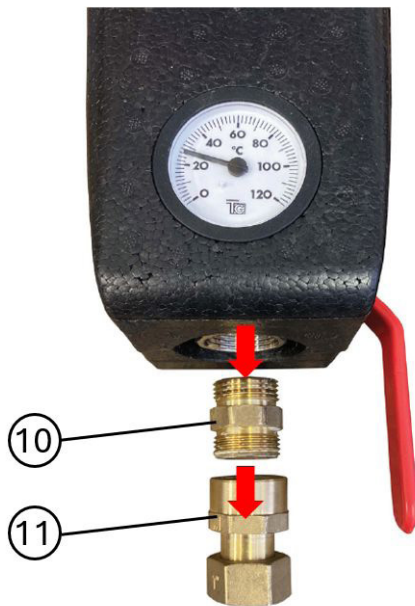
B2. PREPARING THE INDOOR UNIT OF RegulusHBOX 212 RTC:

- Let the heat pump cool down to below 50°C to avoid scalding.
- Before starting work on the device, switch off the power supply and secure it against being switched on again!
- If shut-off valves are installed on the pipes upstream of the heat pump and the heating system, close the valves and depressurise the RegulusHBOX 212 RTC indoor unit. If no shut-off element is installed, the heating system will have to be drained.
- Remove the top insulation from the heating system pump station.
- Disconnect the piping  ,  .
- Remove the pump station from  .

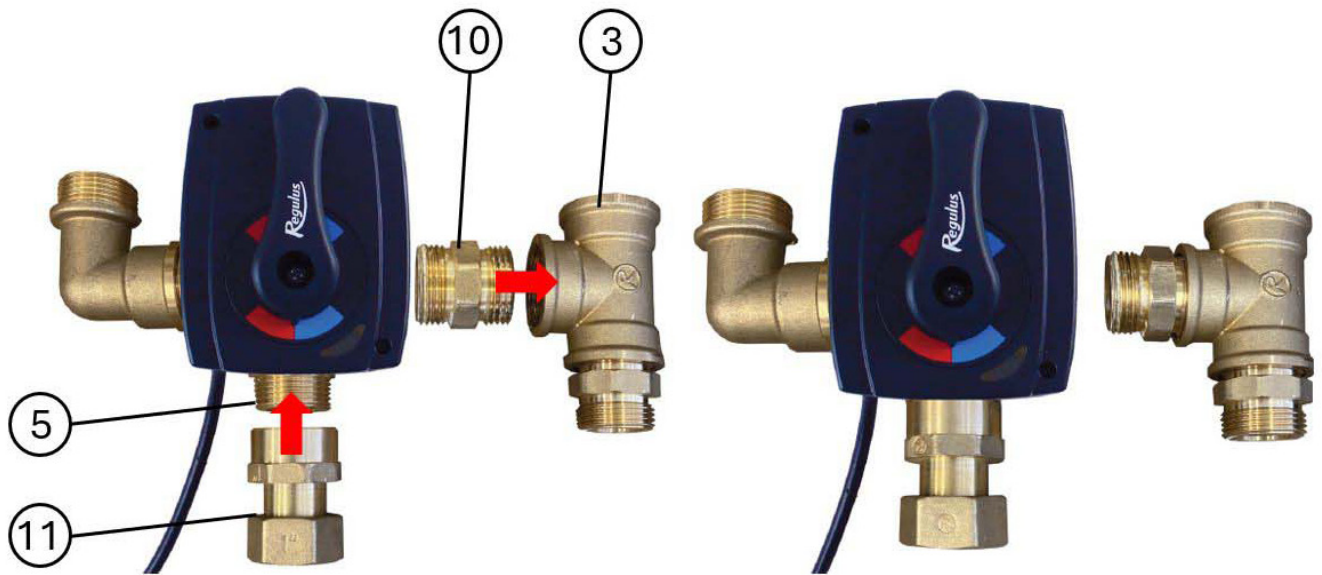


B3. PREPARING THE COOLING KIT:

- Remove the hex nipple (10) and the union (11) from the removed pump station. Replace them with the union (6) from the Cooling Kit.



- Screw the removed union (11) onto the three-way valve w. actuator and elbow (5). We recommend sealing with hemp.
- Screw the removed hex nipple (10) into the T-piece with hex nipple (3). We recommend sealing with hemp.

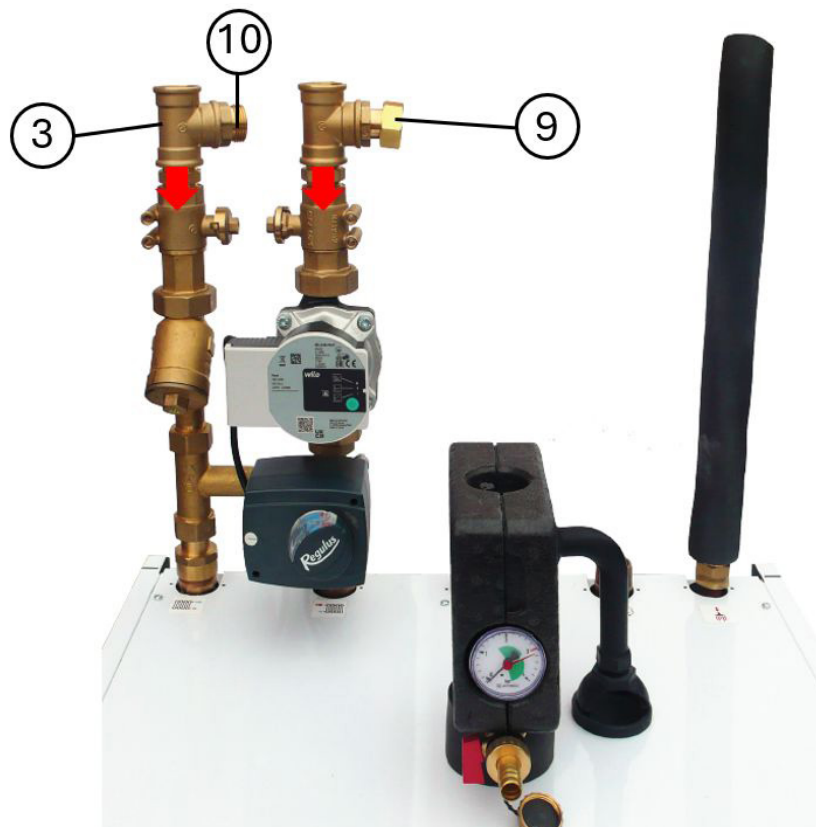



- Insert the gasket (1) into any union nut of the supply piping (4) and attach the ball valve (7). Tighten the union nut.

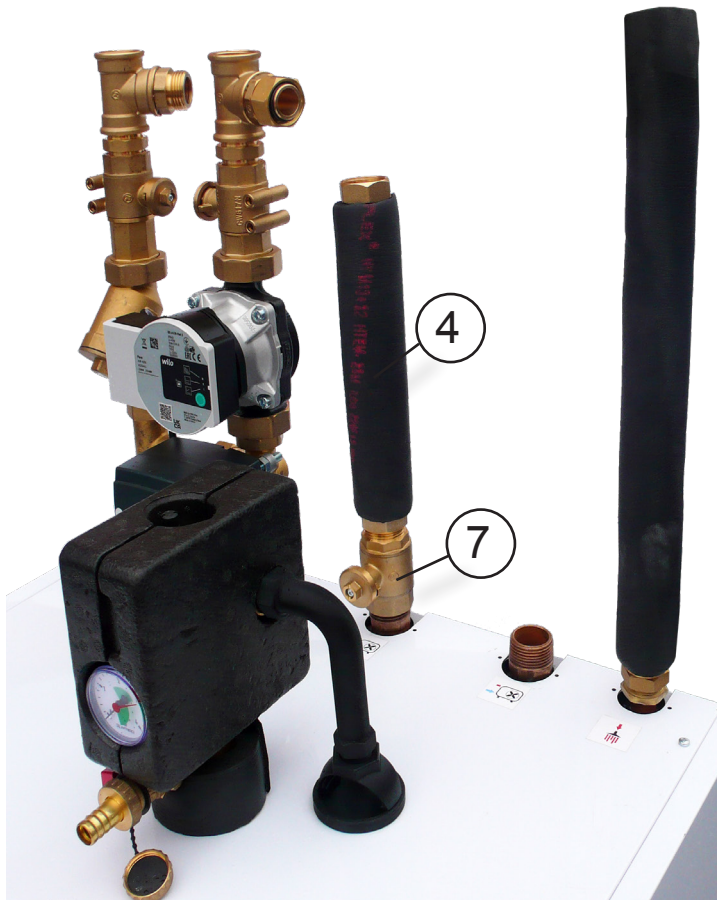



C. INSTALLATION

- Screw the T-piece w. hex nipple and union (9) to the heating system pump station, or the return line with a pump, so that the union points perpendicularly to the right. We recommend sealing with hemp.
- Screw the completed T-piece with two nipples (3+10) onto the supply branch of the heating system pump station (equipped with a filter). The nipple should form an angle of about 15° with the axis of the outlets. We recommend sealing with hemp.



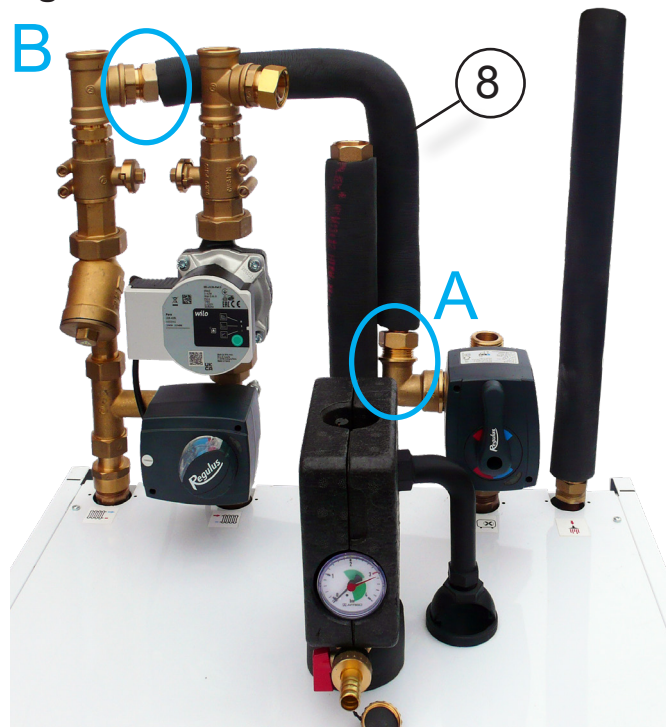
- Screw the valve (7) with the supply pipe (4) from the heat pump onto the  outlet. Screw the assembly in 3 to 4 threads. We recommend sealing with hemp.



- After inserting the gasket, mount the three-way valve (5) w. actuator and elbow on the  outlet, do not tighten yet.



- Insert the gasket and install the return pipe (8) (21048) into the heat pump.
- Connect one end to the elbow of the three-way valve (A).
- Connect the other end to the nipple of the T-piece of the heating system pump station (B).
- Then tighten both ends.



- Insert the gasket and connect the second three-way valve to the supply pipe from the heat pump (C) and to the union from the T-piece of the heating system pump station (D).
- Assemble the piping, tighten after positioning.



- Insert the gasket, mount the pump station on the three-way valve and install the insulation on the heating system pump station.



- **Electrically connect the three-way valves to the positions of universal relays according to the instructions for the RegulusHBOX 212 RTC indoor unit.**
- **Connect the heating system and heat pump pipes, fill, air vent and perform a leak test.**
- **Insulate the kit with Aertape tape to prevent condensation.**

