

Motorized actuators for ball valves. Codes 14093 and 17176.



When connecting the motor to the mains supply, a switching device with a minimum 3 mm spacing between open contacts must be used for all phase conductors.



Before wiring the motor, check that the power supply (main switch) is switched off.

Installation instructions

Mount actuator "d" on valve spindle "a". Fix it to the flange with four M5 nuts.


Possible installation positions of the motorized actuator are shown in Fig. 4-II.

The motorized actuator is set to the middle position by the manufacturer (45°/2).


Now insert the scale "f" - mind the closed and open position of the valve when setting the scale. Finally fit the "g" lever; make sure that the position of the lever corresponds to the scale. Screw in the screw "k".

Instructions for use

Automatic operation

When the knob "e" (Fig. 4) is in position , the actuator works in automatic mode.

Manual operation

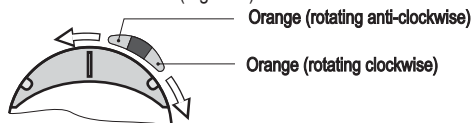
When the knob "e" (Fig. 4) is in position , the actuator operation is off.

The position of the valve shall be set by the lever.

LED indicators

The motorized actuator is fitted with 2 indication LEDs.

The left and right LEDs indicate the sense of rotation of the motorized actuator (Fig. 2-III).



Technical Data

AMC05	14093	17176
Torque	5 Nm	5 Nm
Angle of rotation	90 °	90 °
Shift time	1 min	15 s
Power voltage	230 V ~, 50 Hz	230 V ~, 50 Hz
Consumption	2.5 VA - 4VA	2.5 VA - 4VA
IP rating	IP42	IP42
Protection class	II	II
Dimensions (L x W x H)	84 x 101 x 99 mm	84 x 101 x 99 mm
Weight	560 g	560 g

Disposal of old electrical and electronic equipment

(Applies to EU Member States and other European countries with separate waste collection systems).



This symbol on the product or on the packaging indicates that the product should not be treated as household waste but should be handed over to collection points designated for waste electrical

and electronic equipment (WEEE). By disposing of this product properly, you will avoid negative environmental and health impacts that could otherwise be caused by improper disposal of this product. Recycling materials reduces the consumption of new raw materials. For more information about recycling this product, contact the appropriate authorities, utilities or the store where you purchased this product.

Coordination with standards and normatives

AMC... actuators meet the conditions and rules for the following directives:

- EMC: Electromagnetic Compatibility Directive 2004/108/EC,
- LVD: Low Voltage Directive 2006/95/EC,
- RoHS: RoHS Directive on hazardous substances in electrical and electronic equipment 2002/95/EC.

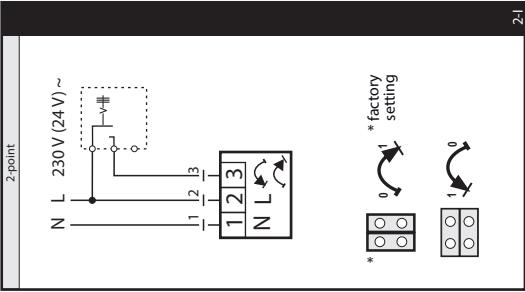
Product description: PROMIX® motorized actuator
Model name: AMC05

Standards used:

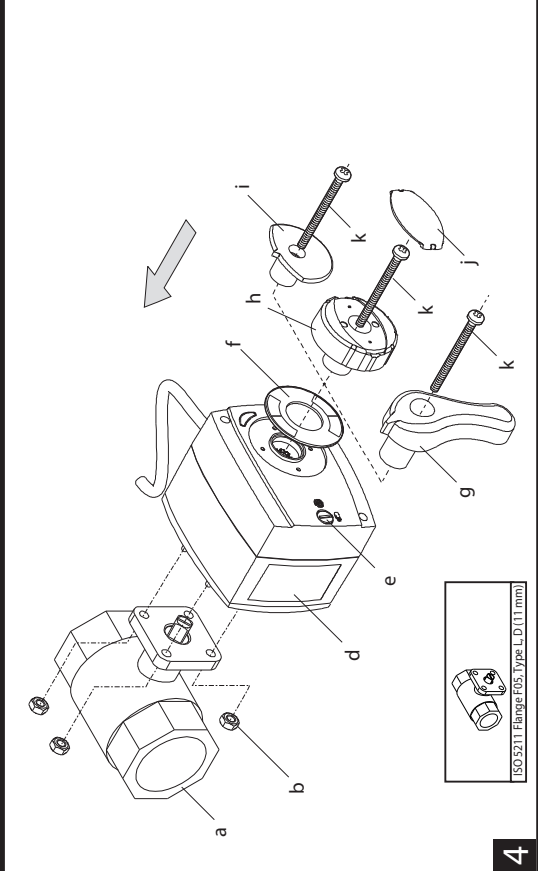
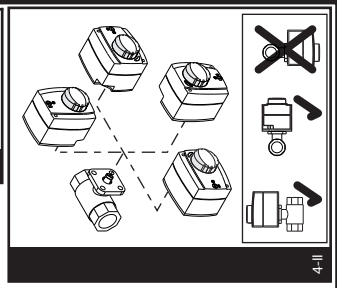
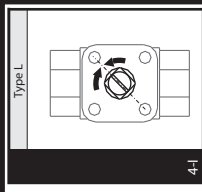
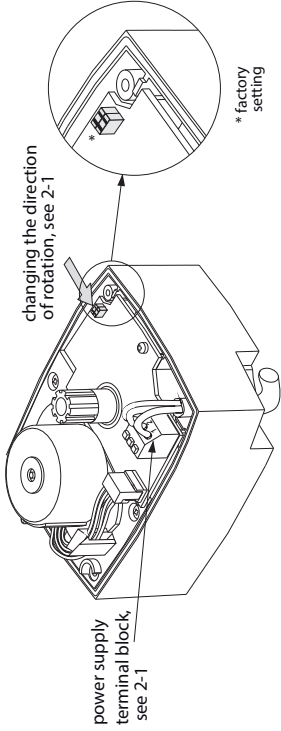
EN60730-1, EN60730 2-14

Ball valve actuator

Code	14093	17176
Power supply	230 V	230 V
Shift time	60 s	15 s
Torque	5 Nm	5 Nm



2



4

