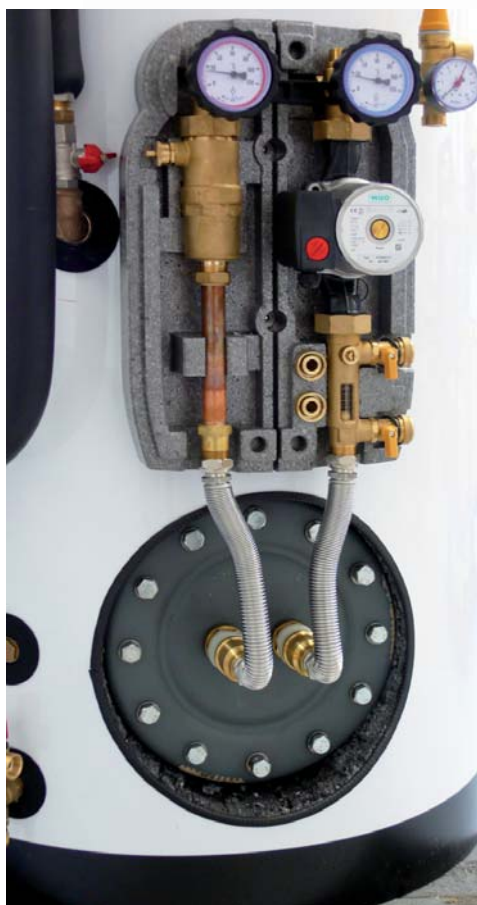


# Instructions for Installation of a Solar Pump Station

## VEGA 390 THERMAL STORE

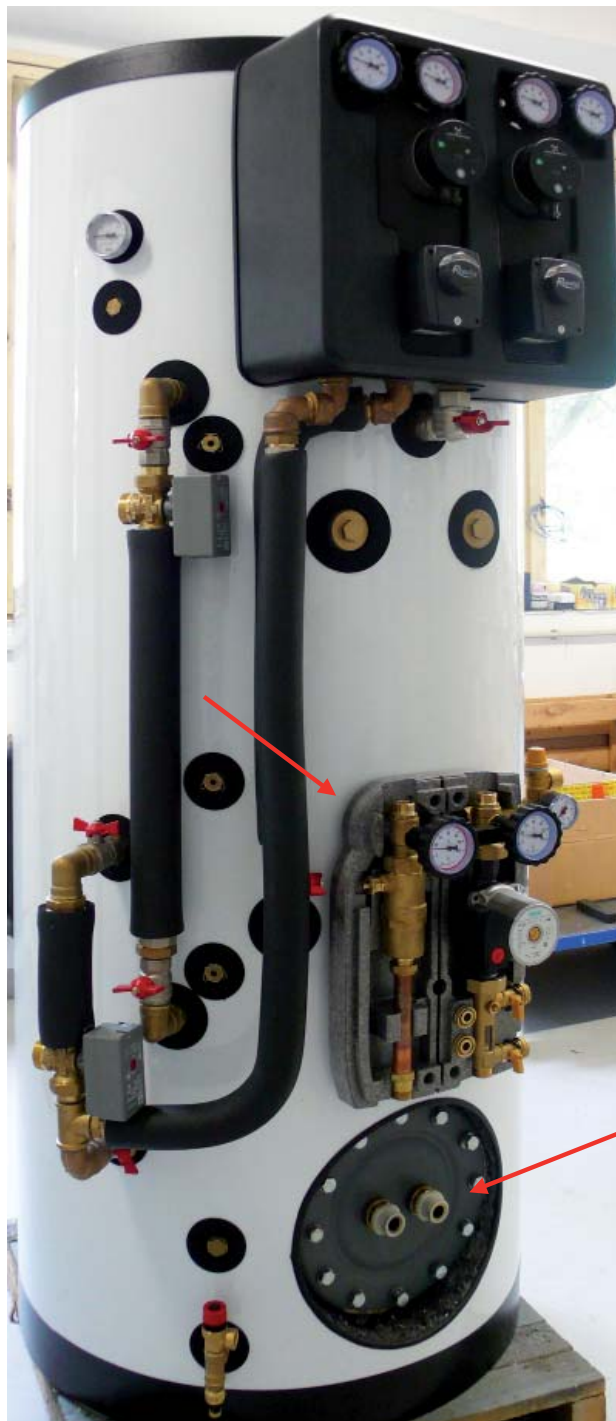


## SCOPE OF SUPPLY:

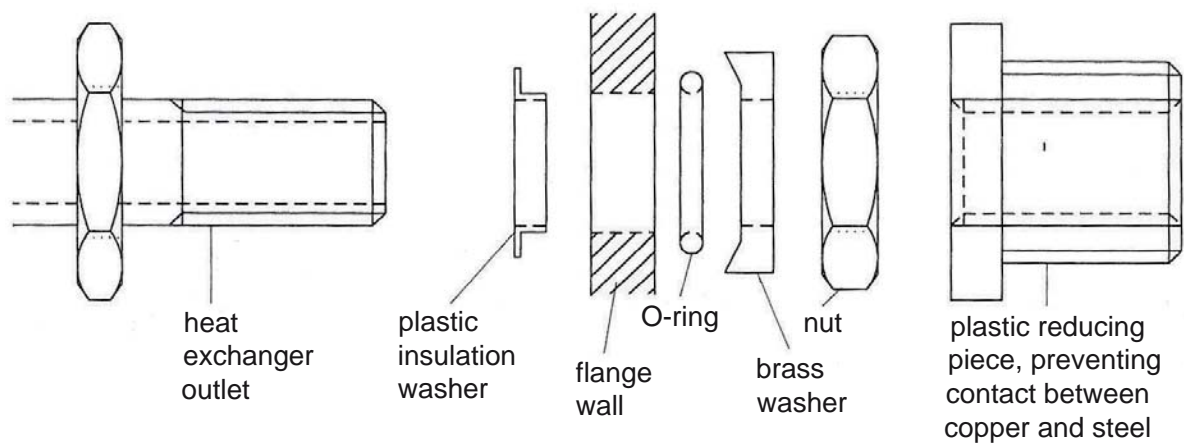
14113 - Solar Pump Station Connection Kit

Code	Name	Qty
3013	DN20 hose for water, 200-400 mm long, 3/4" F/M	2 pcs
154	Sensor Sheath, 7x8x100 mm, 1/2", for 1 sensor	1 pcs
6447	Insulation DNa 28,13 mm thick (2m)	0.8 m
10845	Capillary Spring, small, 1/2", stainless steel	1 pcs
9978	3/4" PTFE Nut Gasket - 15x24x2 mm	2 pcs
8064	Adapter 1"x3/4" in brass	2 pcs
12996	M 6x16 Stainless Steel Bolt (Allen head), DIN 912/A2	2 pcs
7853	Washer 6.5 (large diam. 3d)	2 pcs

1. Fit the Solar Pump Station (code 9909) using 2 bolts (code 12996) and washers (code 7853). Fit the heat exchanger into the flange, see fig.

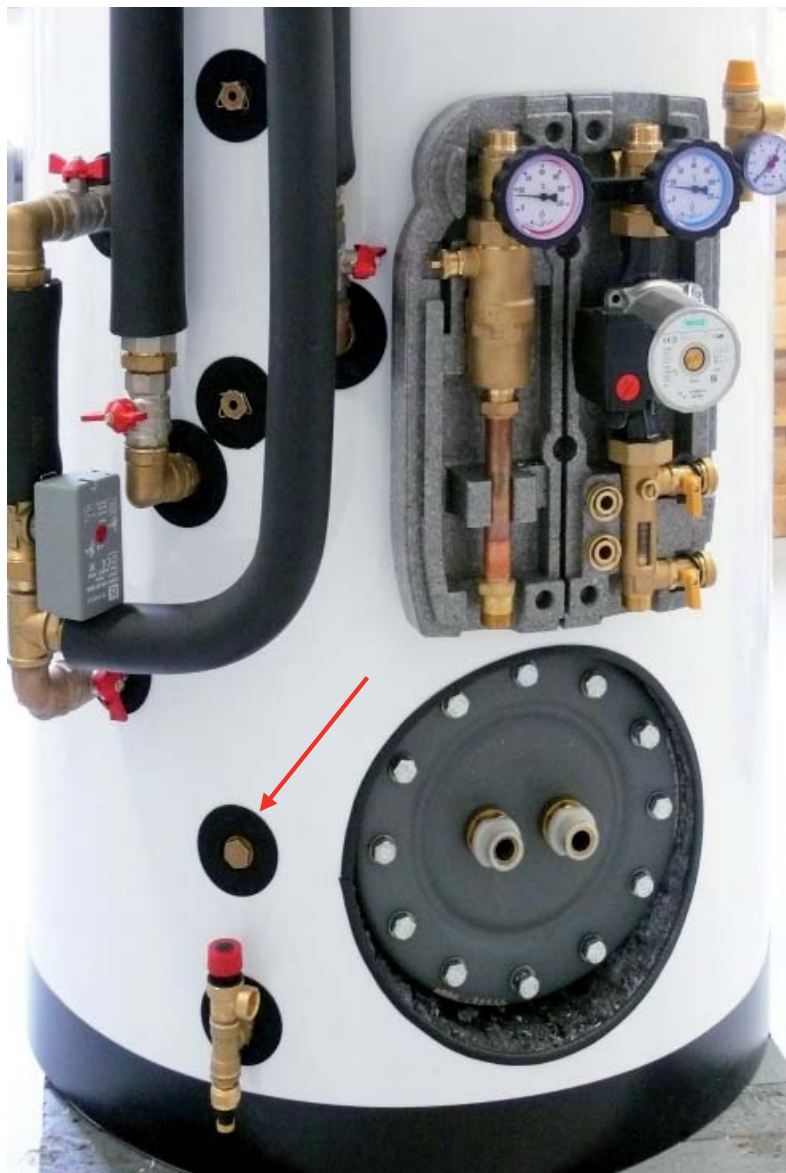


## FITTING A HEAT EXCHANGER INTO A FLANGE



2. Stretch the pipes to their preliminary lengths, cut the insulation and slide it onto the pipes:  
- two 3/4" pipes (code 3013) to 300 mm, insulation about 400 mm.

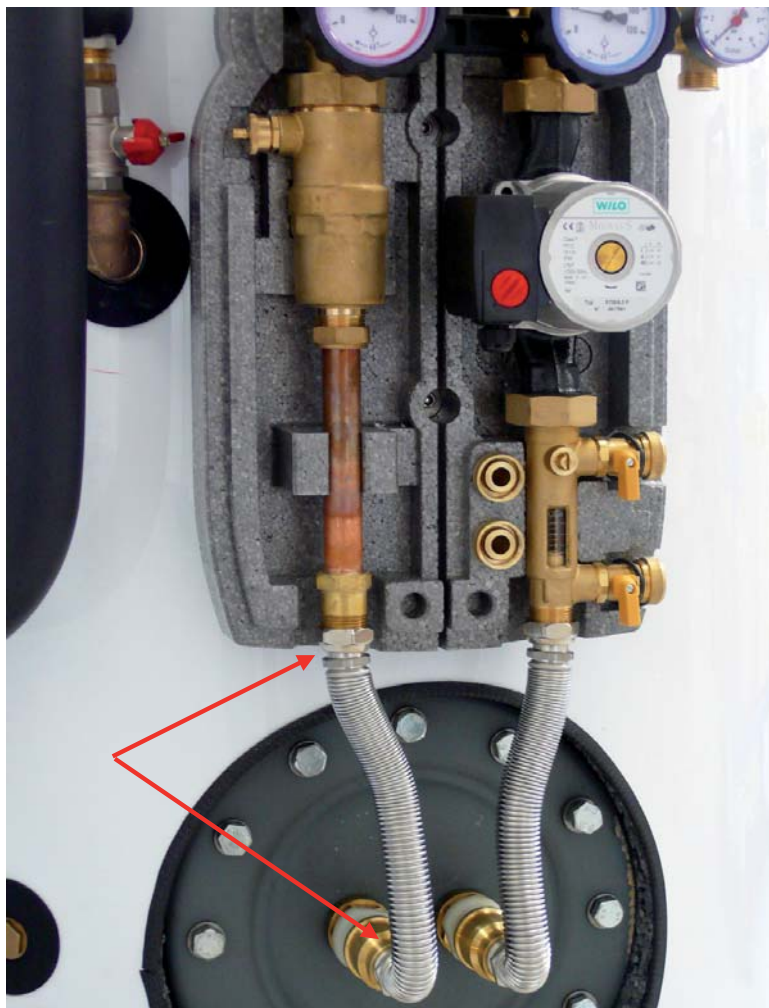
3. Remove the plug and fit the sheath (code 154) with spring (code 10845) in its place.



4. Fit the adapters (code 8064) to the heat exchanger, see fig.



5. Attach pipes (code 3013) to the adapters and connect them to the Solar Pump Station, see fig.



08/2014

**Regulus**

**REGULUS spol. s r.o.**  
Do Koutů 1897/3  
143 00 Praha 4  
CZECH REPUBLIC

<http://www.regulus.eu>  
E-mail: [sales@regulus.cz](mailto:sales@regulus.cz)