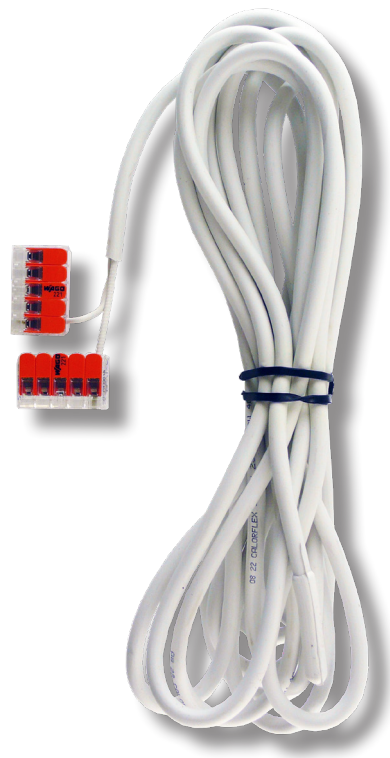




[www.regulus.eu](http://www.regulus.eu)



Heating Cable for RTC

Instructions for Connecting to the Heat Pump  
Heating Cable for RTC

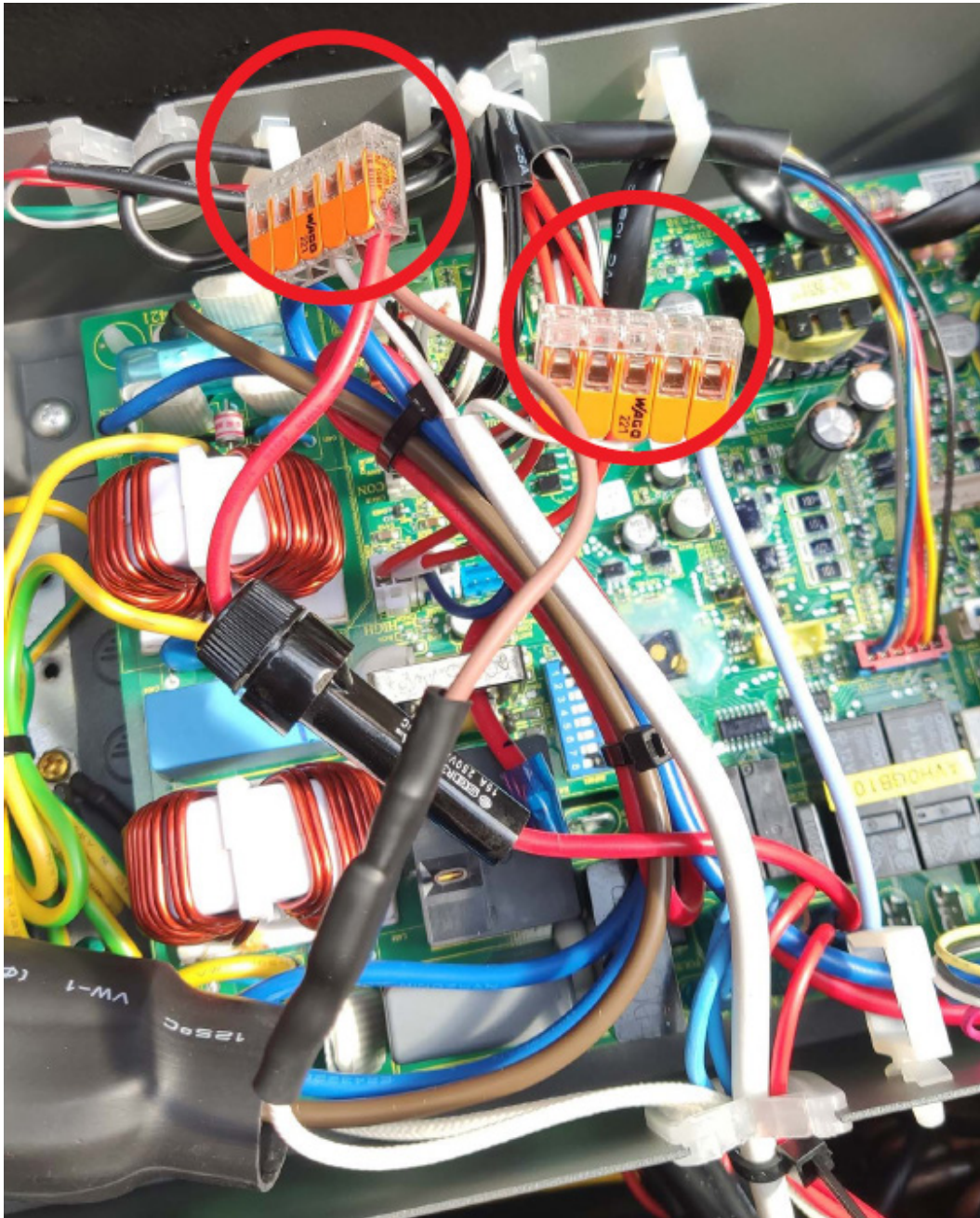
EN

Heating Cable for RTC

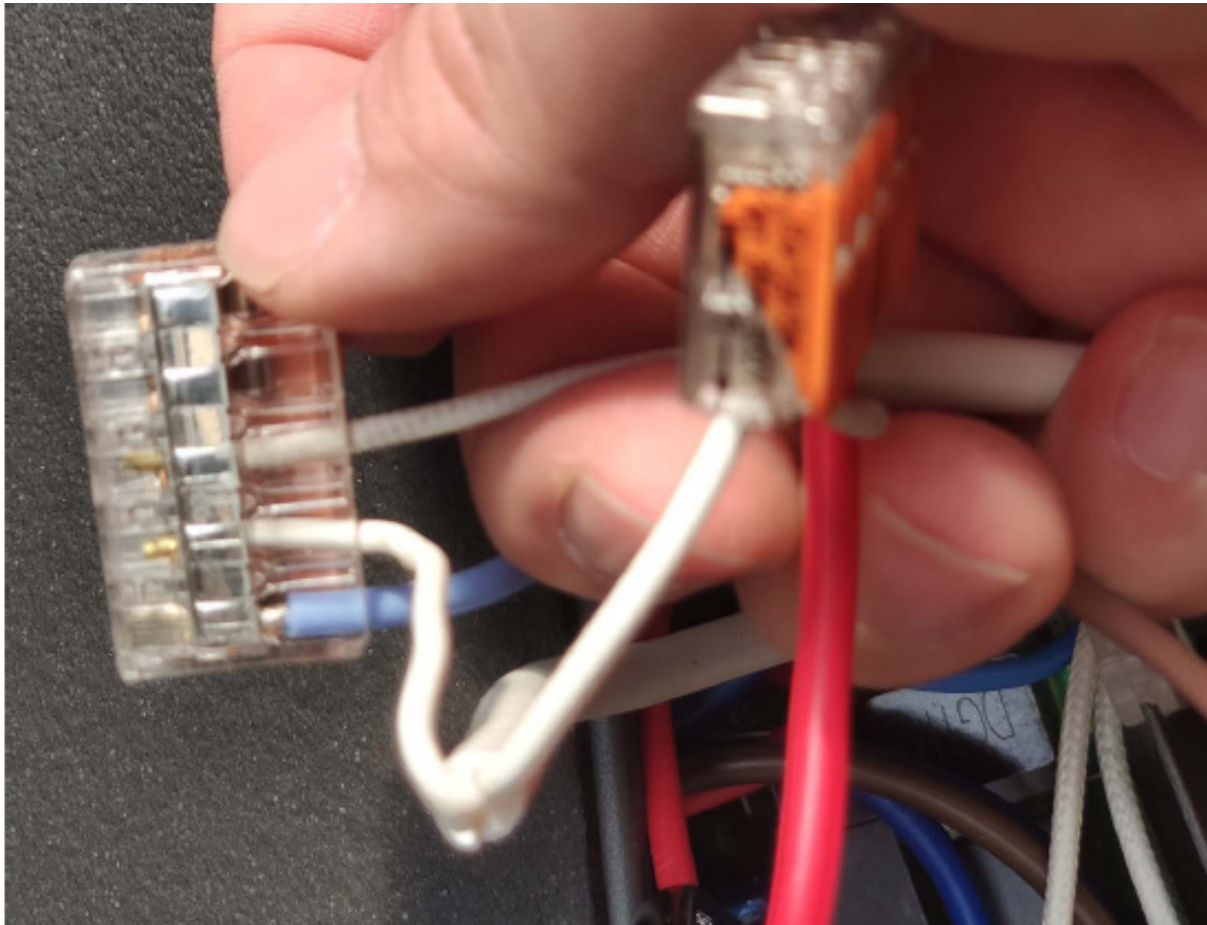
## Heating cable for RTC - how to connect

Connecting the heating cable is an intervention in the heat pump electronics. This may only be carried out by a person with a professional electrotechnical qualification according to valid rules. Tampering with the wiring can cause damage to health and property.

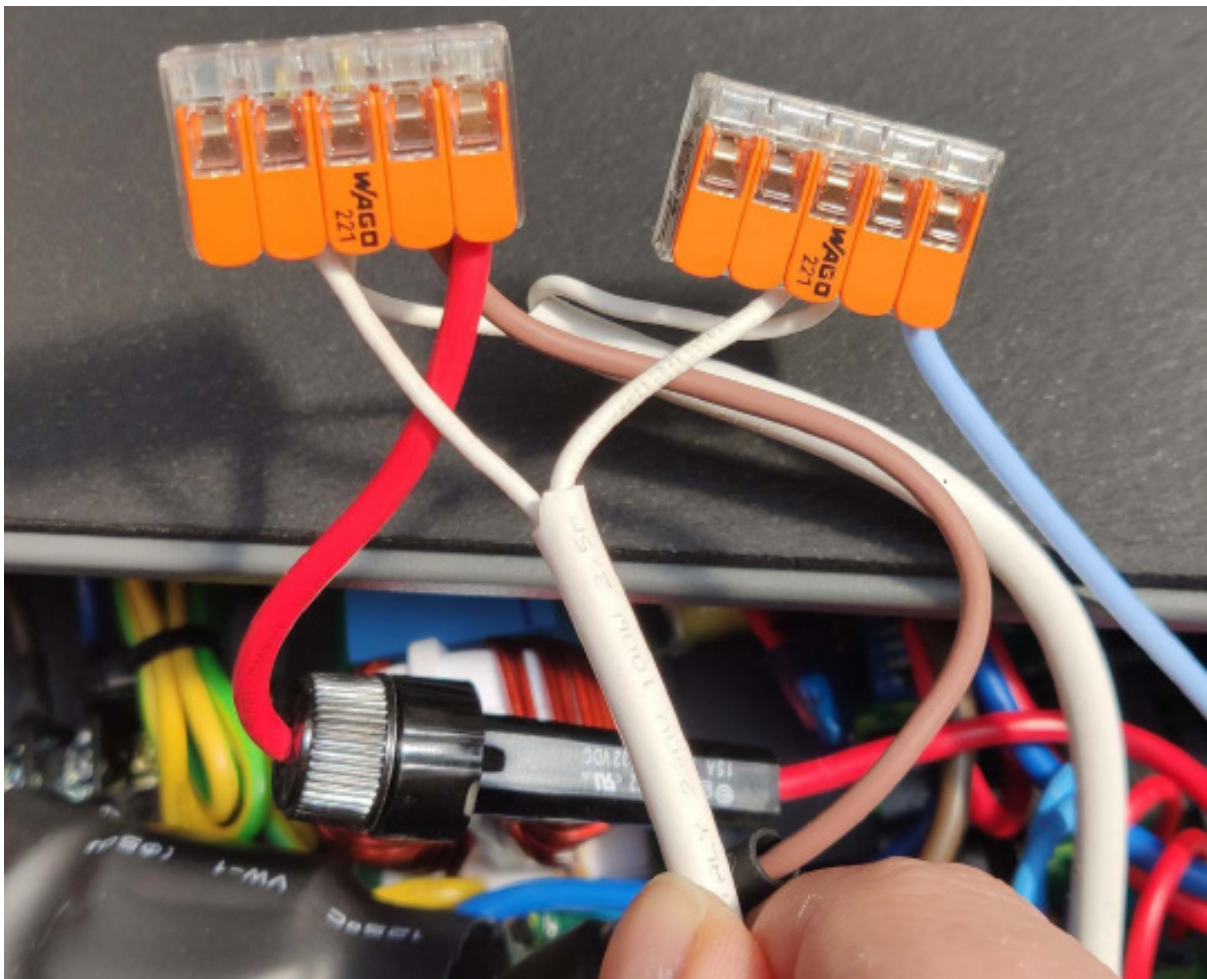
1. Unscrew the upper cover of the heat pump.
2. After exposing the top of the heat pump, remove the electronics cover.
3. There are 2 WAGO terminal blocks under the cover. These connect the internal heating cable and the heating cable of the tray. The heating cable for heating the condensate drain from the heat pump shall be connected to these 2 terminal blocks



4. Run the cable through the heat pump. Use extreme caution when handling silicone insulation. The insulation can easily get cut through.
5. Fasten the wires of the heating cable into the terminal blocks. Open the terminal box by lifting the orange lever, insert the cable and put the lever down. From the other transparent side, verify the correct contact of the non-insulated part of the wire with the terminal. After it clicks, check if the cable cannot be pulled out of the terminal.



6. The heating cable connected in terminal blocks.



7. Replace covers on both the electronics and the heat pump.

