

## Zone Valve Assembly Installation Manual

# VEGA 1000 DVS THERMAL STORE



## SCOPE OF SUPPLY

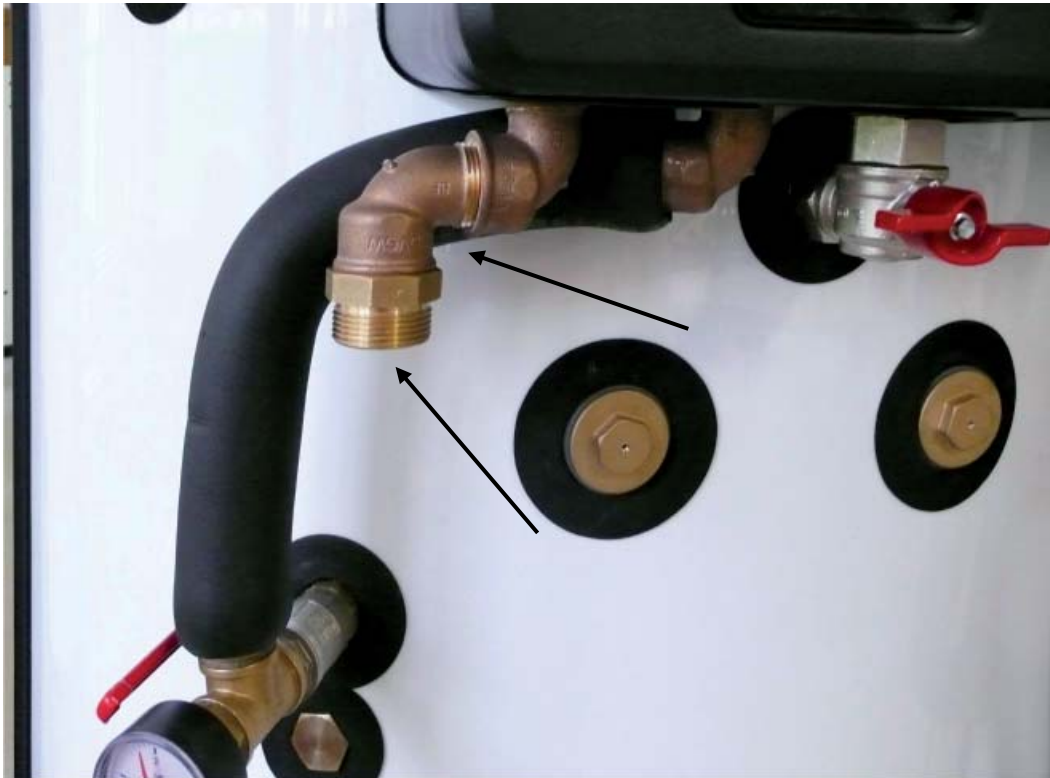
13969 - CONNECTION KIT FOR LK525 TO HEATING RETURN, ON VEGA 1000

Code	Name	Qty
13967	LK525 Connection Assy	1 pc
13156	Zone Valve Assy for VEGA	1 pc
12217	Straight radiator fitting, 1"	1 pc
13965	TDN25 pipe (5/4" nut), l=390 mm	1 pc
13966	DN25 pipe (5/4" nut), l=670 mm	1 pc
7187	Insulation DNa 35,13 mm thick, 2 m	1.3 m

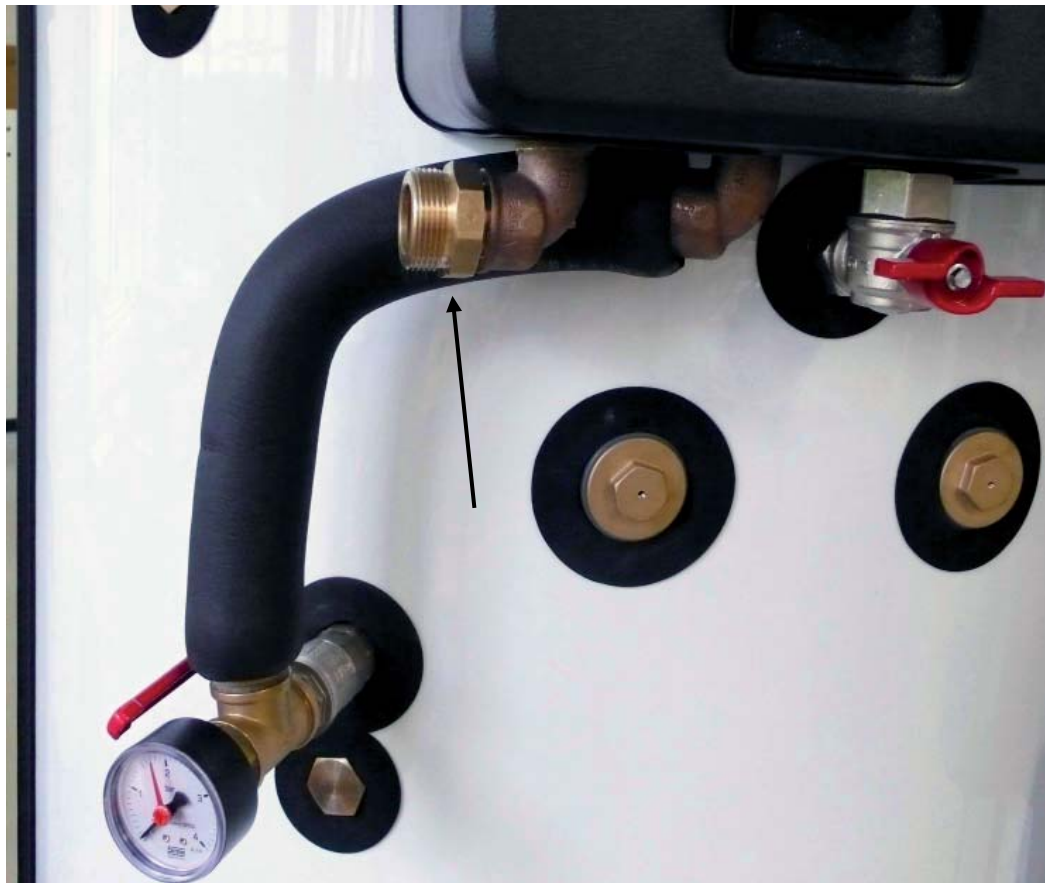
1. Remove the 5/4" pipe connecting the pump station with the ball valve assy.



2. First remove the 5/4"x1" reducing hex nipple from the pump station and then remove the 1" elbow FM.



3. Fit the 5/4"x1" reducing hex nipple from the previous point into the elbow on the pump station.



4. Remove the 5/4"x1" reducing hex nipple from the lower connection point and fit it to the already removed 1" FM elbow. Fit this newly created assembly to the valve as shown in the fig.



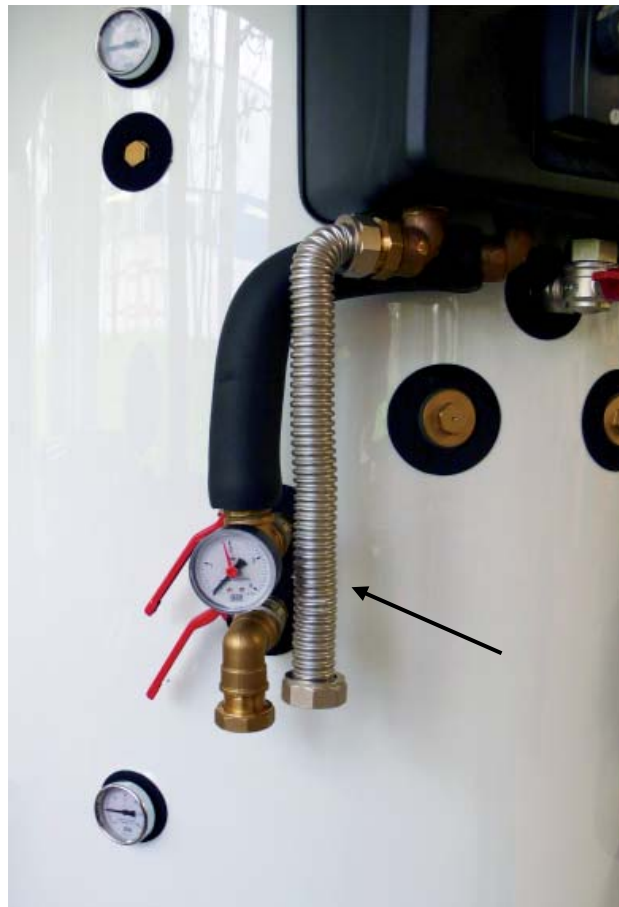
5. Remove the plug below the pressure gauge assy and fit the zone valve connection assy (code 13967) in its place. Remove the handle from the assembly prior to fitting and then return it back.



6. Fit the fitting (code 12217) to the ball valve assy.



7. Cut insulation to circa 500 mm and slide it onto the 5/4" pipe, 390 mm long (code 13965). Then fit the complete pipe to the outer elbow of the pump station.



8. Fit the zone valve assy (code 13156) as shown in the fig.



9. Cut insulation to circa 700 mm and slide it onto the 5/4" pipe, 670 mm long (code 13966). Using this pipe, connect the zone valve with the ball valve assy. Fit the actuator onto the zone valve.



05/2014

**Regulus**

**REGULUS spol. s r.o.**  
Do Koutů 1897/3  
143 00 Praha 4  
CZECH REPUBLIC

<http://www.regulus.eu>  
E-mail: [sales@regulus.cz](mailto:sales@regulus.cz)