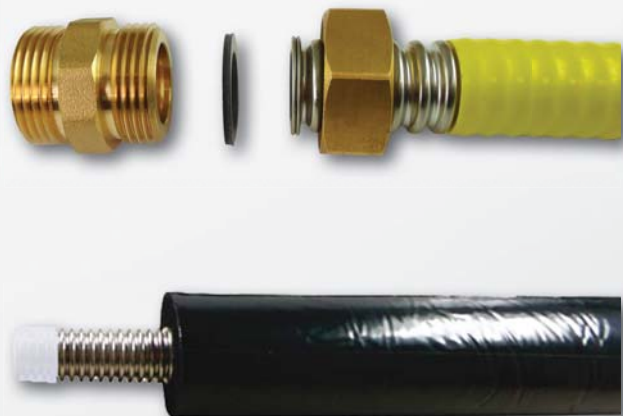


Pipes and Insulation



Stainless Steel
Flexible Pipes



■ GAS PIPES



SICURFLEX Stainless Steel Pipes

Easily shapeable stainless steel pipes with yellow PE coating. The pipes are intended for indoor gas piping, overpressure 0.5 bar max.

They are supposed to be cut to the desired length on site. They are easily flexible, with bends replacing pipe elbows.

Certified to EN 15266:2008.

Technical Data

Pipe material	AISI 316L (1.4404)
Nut material	brass
Gasket	NBR
Pipe wall thickness	0,3 mm
Coating thickness	0,5 mm
Working temperature	0 °C to +60 °C
Max. working overpressure	0.5 bar

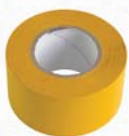
Dimensions and Types

	Inner diam. [mm]	Outer diam. [mm]	Min. bend diam. [mm]	Union nut size	Tightening torque [nm]	Pipe code 1 pc - 4 m	Pipe code - by meter	Nut + gasket code	Gasket code
DN 12 pipe	12.0	15.8	25	1/2"	40	13459	13460	13634	14090
DN 15 pipe	15.7	20.0	25	3/4"	50	13461	13463	13635	14091
DN 20 pipe	19.7	25.0	30	1"	50	13462	13464	13636	14092

Accessories

Protective Yellow Duct Tape – code 13940

Intended for protection of uninsulated pipe sections, nuts and fittings against chemical and electrical corrosion and mechanical damage.



Gas pipe installation shall be done by qualified staff only.

■ WATER AND SOLAR PIPES



KOMBIFLEX Stainless Steel Pipes

Easily shapeable pipes made of stainless steel are intended for fixed pressure connections for domestic and drinking water. Kombiflex is suitable for connections of storage water heaters, boilers, radiators, water outlets, dishwashers and wherever quick installation and flexibility is an advantage. When used for hot water distribution or run in a wall, or for solar thermal systems, it is advisable to add insulation or use pre-insulated pipes. The pipes are cut to the desired length on the spot, elbows are replaced by pipe bends.

Technical Data

Pipe material	AISI 304
Nut material	nickel plated brass
Pipe wall thickness	0.22 mm
Working temperature	-20 °C to +120 °C
Max. working overpressure	16 bar (up to DN 20) / 6 bar (DN 25)

Certified for drinking water.

Dimensions and Types

	Inner diam. [mm]	Outer diam. [mm]	Min. bend diam. [mm]	Union nut size	Code		Nut+gasket code	Gasket code	Teflon gasket code	Suitable insulation DN _a *
					2 m	4 m by meter				
DN 8	8.1	11.7	24	3/8"	3 713		769	5 667	9 976	DN _a 13
DN 12	13	16.8	34	1/2"		3 093 4 654	770	5 553	9 977	DN _a 18
DN 16	15.7	20	40	3/4"		3 094 4 655	771	5 554	9 978	DN _a 22
DN 20	19.7	25	50	1"		3 267 4 656	3 343	5 668	9 980	DN _a 28
DN 25	26.5	33	66	5/4"		3 379	3 344	6 799	9 981	DN _a 35

* DN_a means the insulation hole diameter

Pre-insulated stainless steel pipes

The pipes are fitted with EPDM insulation with a protective surface coating resistant to high temperatures and UV radiation, which means it is suitable for solar thermal systems.

Code	Pipe DN	Nut	Insulation thickness	Length
8 075	12	1/2"	13 mm	30 m
8 078	12	1/2"	19 mm	30 m
8 076	16	3/4"	13 mm	30 m
8 079	16	3/4"	19 mm	30 m
8 077	20	1"	13 mm	30 m
8 080	20	1"	19 mm	30 m

■ ACCESSORIES FOR PREPARING KOMBIFLEX AND SICURFLEX PIPES

Pipe cutter for DN 8 to DN 20 pipes - code 713



Tube template rammer + clamps

Tube template rammer, DN 8 to DN 20 - code 3 430

Tube template rammer, DN 25 - code 7 596



Kombiflex clamp, 1/2", 3/4" - code 720

Kombiflex clamp, 3/8", 1" - code 3 659

Kombiflex clamp, 5/4" - code 7 597

Sicurflex clamp, 1/2", 3/4" - code 13 939

Sicurflex clamp, 1/2", 1" - code 14 088

Sicurflex clamps are different from Kombiflex ones and are marked GAS.



Tool Case – contains a pipe cutter, two twin Kombiflex clamps (code 720+3 659), tube template rammer (code 3430) and 4x 10 nickel-plated union nuts with gaskets.

Tool Case code 3 834.



Nipples with enlarged sealing surface area

In order to secure good tightness, the pipes shall be connected to nipples with sufficient sealing surface area (wall thickness) only.

Nipples with enlarged sealing surface area	Code
1/2" M/M	6 971
1/2" x 3/4 M/M	6 965
1/2" x 3/4 F/M	6 964
3/4" M/M	6 970
3/4" x 1" M/M	6 967
3/4" x 1" F/M	13 366
1" M/M	6 969
1" x 5/4" M/M	6 966



Wall Mount Pipe Clamps, M8 screw, screw and dowel included

Pipe	Code
DN 12 pipe	14 160
DN 15 pipe	14 161
DN 20 pipe	14 162





SOLARFLEX A-MONO Stainless Steel Flexible Pipes

Single stainless steel pipe in EPDM thermal insulation with PE coating (enhanced protection against UV radiation), intended for easy connection of solar collectors, pump stations, solar cylinders etc.

The insulation consists of sealed cells, without addition of PVC or substances dangerous to the ozone layer. It is soft and flexible. It withstands temperatures up to 175°C in long term, and up to 230°C in short term (stagnation).

Technical Data

Pipe material	AISI 316 L
Nut material	brass
Pipe wall thickness	0.18
Working temperature	- 57 °C to +175 °C (up to +230°C in short term)
Max. working overpressure	10 bar

Dimensions and Types



12 922 (DN 12)
and 12 932 (DN 16-20)



14 841 (DN 12),
9 644 (DN 16) and 9 645 (DN 20)

SOLARFLEX A - MONO - 13 mm Insulation

	Dimension	Length	Code
DN 12 Stainless steel pipe, 10m, incl. insulation, 4 nuts with lock rings and nipple	DN 12	10 m	12 895
DN 12 Stainless steel pipe, 20m, incl. insulation, 4 nuts with lock rings and nipple	DN 12	20 m	12 897
DN 12 Stainless steel pipe, 30m, incl. insulation, 4 nuts with lock rings and nipple	DN 12	30 m	12 896
DN 12 Stainless steel pipe, 50m, incl. insulation	DN 12	50 m	12 898
DN 16 Stainless steel pipe, 10m, incl. insulation, 4 nuts with lock rings and nipple	DN 16	10 m	12 899
DN 16 Stainless steel pipe, 20m, incl. insulation, 4 nuts with lock rings and nipple	DN 16	20 m	12 900
DN 16 Stainless steel pipe, 30m, incl. insulation, 4 nuts with lock rings and nipple	DN 16	30 m	12 901
DN 16 Stainless steel pipe, 50m, incl. insulation	DN 16	50 m	12 902
DN 20 Stainless steel pipe, 10m, incl. insulation, 4 nuts with lock rings and nipple	DN 20	10 m	12 903
DN 20 Stainless steel pipe, 20m, incl. insulation, 4 nuts with lock rings and nipple	DN 20	20 m	12 904
DN 20 Stainless steel pipe, 30m, incl. insulation, 4 nuts with lock rings and nipple	DN 20	30 m	12 905
DN 20 Stainless steel pipe, 50m, incl. insulation	DN 20	50 m	12 906

SOLARFLEX A - MONO - 19 mm Insulation

	Dimension	Length	Code
DN 12 Stainless steel pipe, 10m, incl. insulation, 4 nuts with lock rings and nipple	DN 12	10 m	12 907
DN 12 Stainless steel pipe, 20m, incl. insulation, 4 nuts with lock rings and nipple	DN 12	20 m	12 910
DN 12 Stainless steel pipe, 30m, incl. insulation, 4 nuts with lock rings and nipple	DN 12	30 m	12 909
DN 12 Stainless steel pipe, 50m, incl. insulation	DN 12	50 m	12 902
DN 16 Stainless steel pipe, 10m, incl. insulation, 4 nuts with lock rings and nipple	DN 16	10 m	12 911
DN 16 Stainless steel pipe, 20m, incl. insulation, 4 nuts with lock rings and nipple	DN 16	20 m	12 912
DN 16 Stainless steel pipe, 30m, incl. insulation, 4 nuts with lock rings and nipple	DN 16	30 m	12 913
DN 16 Stainless steel pipe, 50m, incl. insulation	DN 16	50 m	12 914
DN 20 Stainless steel pipe, 10m, incl. insulation, 4 nuts with lock rings and nipple	DN 20	10 m	12 915
DN 20 Stainless steel pipe, 20m, incl. insulation, 4 nuts with lock rings and nipple	DN 20	20 m	12 916
DN 20 Stainless steel pipe, 30m, incl. insulation, 4 nuts with lock rings and nipple	DN 20	30 m	12 917
DN 20 Stainless steel pipe, 50m, incl. insulation	DN 20	50 m	12 918

SOLAR PIPES



SOLARFLEX A-DUO Stainless Steel Flexible Pipes

Two stainless steel pipes with silicone sensor cable (2x0.75mm²) in a double EPDM thermal insulation with PE coating that ensures enhanced protection against UV radiation. The pipes can be separated easily. They are marked to avoid interchanging the flow and return lines.

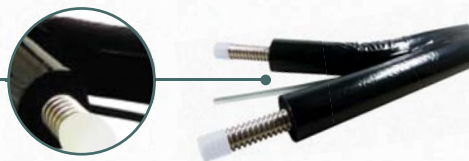
The insulation consists of sealed cells, without addition of PVC or substances dangerous to the ozone layer. It is soft and flexible. It withstands temperatures up to 175°C in long term, and up to 230°C in short term (stagnation).

Technical Data

Pipe material	AISI 316 L
Nut material	brass
Pipe wall thickness	0.18
Working temperature	- 57 °C to +175 °C (up to +230°C in short term)
Max. working overpressure	10 bar

Dimensions and Types

EASY TO SPLIT,
E.G. AT
A COLLECTOR



12 934 (DN 12), 9 641 (DN 16)
and 9 646 (DN 20)



14 841 (DN 12),
9 644 (DN 16)
and 9 645 (DN 20)

SOLARFLEX A - DUO	Dimension	Length	Code
DN 12 Twin stainless steel pipe, 10m, incl. insulation, 4 nuts with lock rings and nipple	DN 12	10 m	12 929
DN 12 Twin stainless steel pipe, 15m, incl. insulation, 4 nuts with lock rings and nipple	DN 12	15 m	12 919
DN 12 Twin stainless steel pipe, 50m, incl. insulation	DN 12	50 m	14 901
DN 16 Twin stainless steel pipe, 10m, incl. insulation, 4 nuts with lock rings and nipple	DN 16	10 m	9 916
DN 16 Twin stainless steel pipe, 15m, incl. insulation, 4 nuts with lock rings and nipple	DN 16	15 m	9 619
DN 16 Twin stainless steel pipe, 50m, incl. insulation	DN 16	50 m	10 564
DN 20 Twin stainless steel pipe, 10m, incl. insulation, 4 nuts with lock rings and nipple	DN 20	10 m	9 917
DN 20 Twin stainless steel pipe, 15m, incl. insulation, 4 nuts with lock rings and nipple	DN 20	15 m	9 620
DN 20 Twin stainless steel pipe, 50m, incl. insulation	DN 20	50 m	10 565

PIPE INSULATION

STANDARD INSULATION

SOLARFLEX A-DUO Stainless Steel Pipes The insulation consists of sealed cells, without addition of PVC or substances dangerous to the ozone layer. It is soft and flexible. It withstands temperatures up to 175°C in long term, and up to 230°C in short term (stagnation).



Standard insulation	Insulation thickness	Code
DN _a 10	13 mm	6 442
DN _a 13	13 mm	6 443
DN _a 16	13 mm	6 444
DN _a 18 by meter	13 mm	7 426
DN _a 22 by meter	13 mm	7 473
DN _a 28	13 mm	6 447
DN _a 35	13 mm	7 187
DN _a 15	19 mm	7 053
DN _a 18 by meter	19 mm	7 346
DN _a 18 self-adhesive, cut lengthwise	19 mm	7 189
DN _a 22 by meter	19 mm	7 347
DN _a 22 self-adhesive, cut lengthwise	19 mm	7 190
DN _a 28 by meter	19 mm	12 155
DN _a 28 self-adhesive, cut lengthwise	19 mm	9 391
DN _a 35	19 mm	7 188
DN _a 35 self-adhesive, cut lengthwise	19 mm	9 392



Regulus spol. s r.o., Czech Republic
Do Koutů 1897/3, 143 00 Praha 4
Tel.: +420 241 765 191, Fax: +420 241 763 976
E-mail: sales@regulus.eu
Web: www.regulus.eu

Energy-saving solutions