

DATA SHEET

RPA 25-8, G 6/4" Pump



Main Features

Description	High-efficiency wet-running ON/OFF circulation pump intended for circulation of fluids in heating systems; the pump is equipped with an anti-block motor w. integrated electronic performance control; LED operation indication for easy monitoring; selection from the following modes possible: constant speed I, II, III, PP mode for variable differential pressure or CZ for constant differential pressure.
Working fluid	Water, water-glycol mixture (max. 1:1) – pH 6.5-8.5. We recommend placing a filter with a mesh size of max. 0.6 mm upstream of the pump – e.g. Magnetfilterball – see the Catalogue for codes.
Codes	21415 – 130 mm, 21416 – 180 mm

Technical Data

Fluid working temperature	5–110 °C
Ambient temperature	0–40 °C
Max. relative humidity	95 % non condensing
Max. working pressure	10 bar
Max. head	8.5 m
Port-to-port length	130 or 180 mm
Connection	G 6/4"
Weight	130 mm – 1.75 kg/180 mm – 1.86 kg

Electric Data

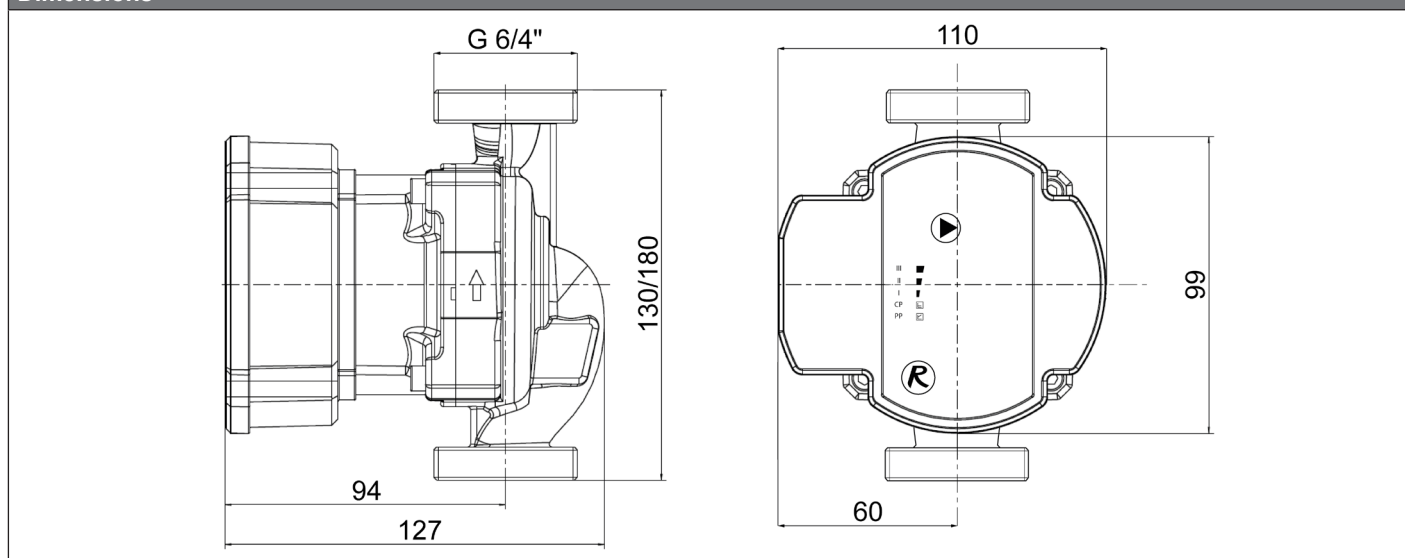
Power supply	1~230 V, 50/60 Hz
Max. power consumption	65 W
Max. current	0.65 A
IP rating	IP 44
Insulation class	F
Motor protection	not needed (block resistant)

Minimum pressures at suction port to avoid cavitation

Minimum pressures at suction port	0.5 mH ₂ O at 85 °C 2.8 mH ₂ O at 90 °C 11.0 mH ₂ O at 110 °C
-----------------------------------	--

3 m long power supply cable with connector is included in supply.

Dimensions

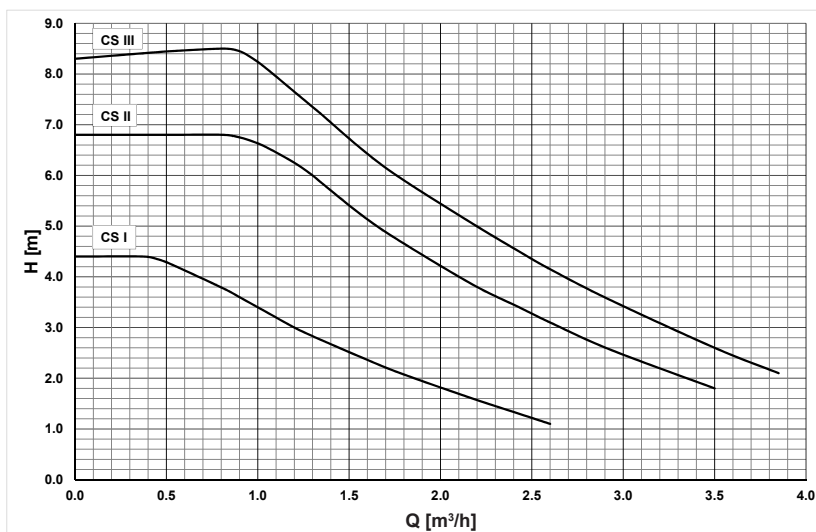


DATA SHEET

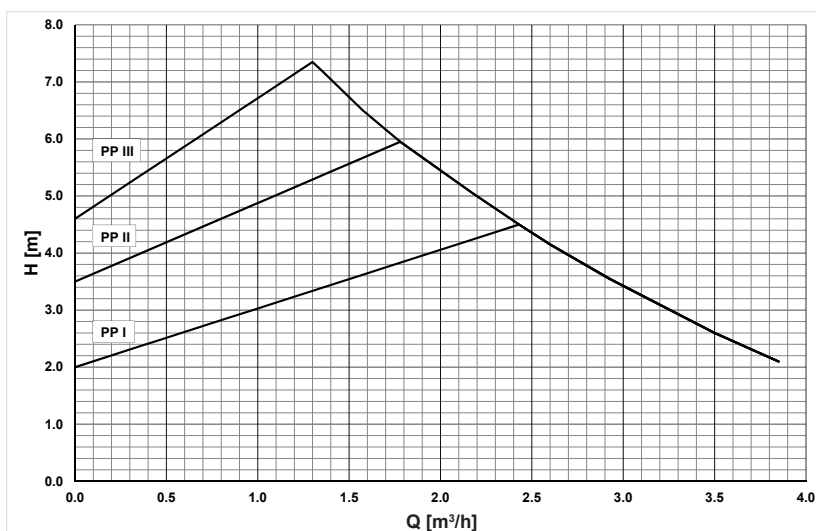
RPA 25-8, G 6/4" Pump

Pump performance curves

Constant speed



Variable pressure



Constant pressure

