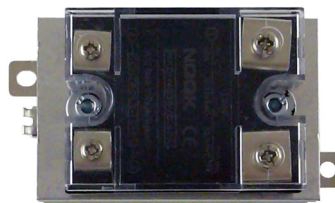
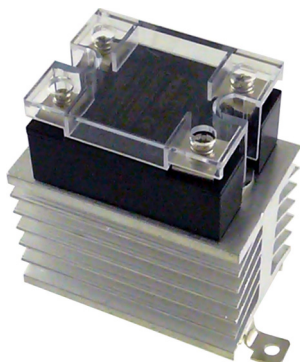
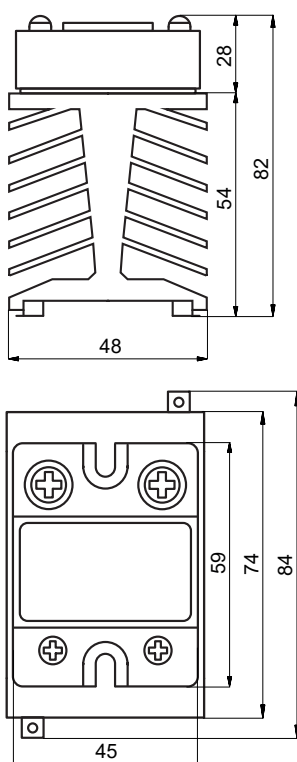


DATA SHEET

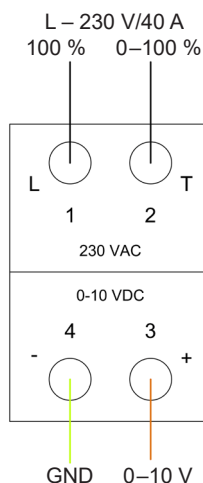
SSR Relay with heat sink



Dimensions



Wiring diagram



Main Features

Description	SSR relay with heat sink suitable for control of heating elements by the IR14 smart controller when utilizing surplus energy from photovoltaic systems.
Installation	On a DIN rail in a distribution cabinet. Due to its dimensions, it cannot be placed in standard distribution cabinets for modular devices. It is necessary to ensure sufficient cooling of the distribution cabinet (heating depends on the consumption of the connected load).
Code	20941 – 1 SSR relay with heat sink 21559 – set of 3 SSR relays with heat sinks

Technical Data

Rated voltage	250 VAC
Frequency	50 Hz
Load	24-250 VAC
Nominal current	40 A
Max. voltage drop	1.5 V/A
Maximum leakage current into load	2 mA
Dielectric strength	2500 V
Degree of protection	IP20
Control	0–10 V
Control principle	phase
Phase terminal	M4
Control terminal	M3
Operating temperature	–20–80 °C
Weight	0.3 kg