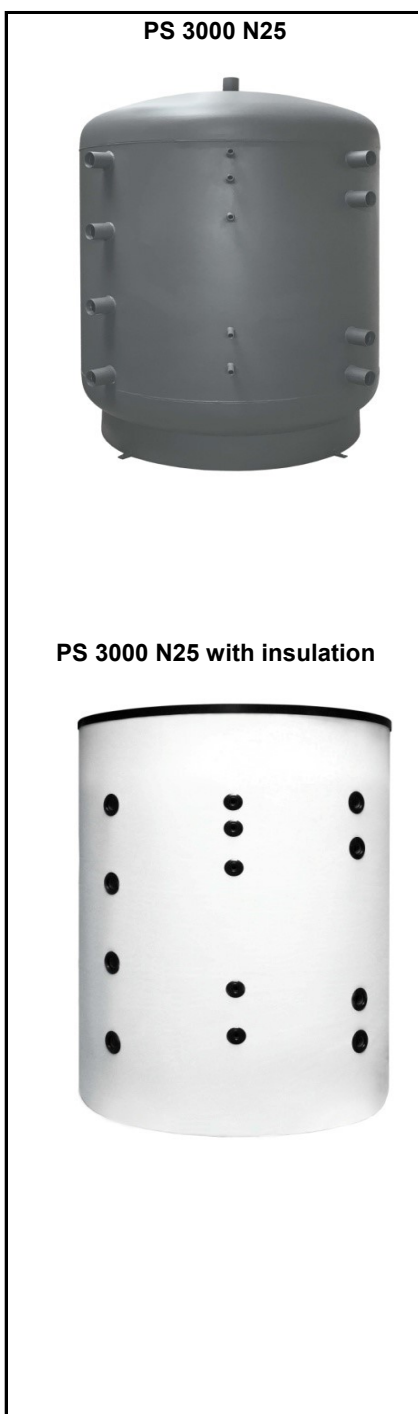


PS 3000 N25 Thermal Store

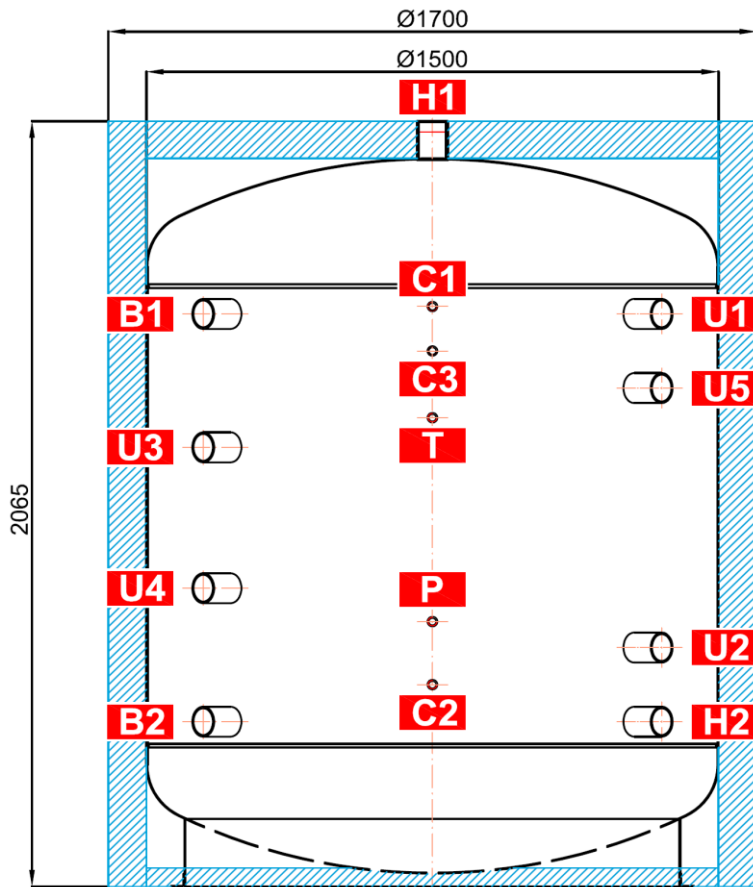


Main features	
Application	storage and subsequent distribution of thermal energy from solid-fuel boilers, heat pumps or other heat sources
Description	welded steel tank
Working fluid	water, water-glycol mixture (max. 1:1), water-glycerine mixture (max. 2:1), thermal oil
Code	
Thermal Store	14 454
Insulation	16 354
Energy Efficiency Data (as per EC Regulation No. 812/2013)	
Energy efficiency class	PS 3000 N25 with insulation N/A
Standing loss	251 W
Storage volume	3022 l
Technical Data	
Total tank volume	3022 l
Max. working temperature in Thermal Store	95 °C
Max. working pressure in Thermal Store	3 bar
Materials	
Tank material	S235JR
Tank perimeter insulation	fleece
Tank perimeter insulation's outer surface	PU leather
Top and bottom tank insulation	fleece
Dimensions, Tipping height, Insulation thickness, Weight	
Tank diameter	1500 mm
Tank diameter with insulation	1700 mm
Tank overall height	2065 mm
Tipping height without insulation	2180 mm
Tank perimeter insulation thickness	100 mm
Bottom insulation thickness	50 mm
Top insulation thickness	120 mm
Empty weight without insulation	309 kg
Accessories	
El. heating element (models)	ETT-A,C, D, F, G, L, M
Heating elem. max. length / output	955 mm / 12 kW

PS 3000 N25 Thermal Store

Dimensions

Tipping height without insulation 2180 mm.



TAPPINGS

pos.	connection	height [mm]
Heat sources		
B1	G 2,5" F	1545
B2	G 2,5" F	445
Heating system		
H1	G 2,5" F	2065
H2	G 2,5" F	445
Control and safety		
C1	G 1/2" F	1565
C2	G 1/2" F	545
C3	G 1/2" F	1445
T	G 1/2" F	1265
P	G 1/2" F	715
Universal inlet/outlet		
U1	G 2,5" F	1545
U2	G 2,5" F	645
U3	G 2,5" F	1185
U4	G 2,5" F	805
U5	G 2,5" F	1345

