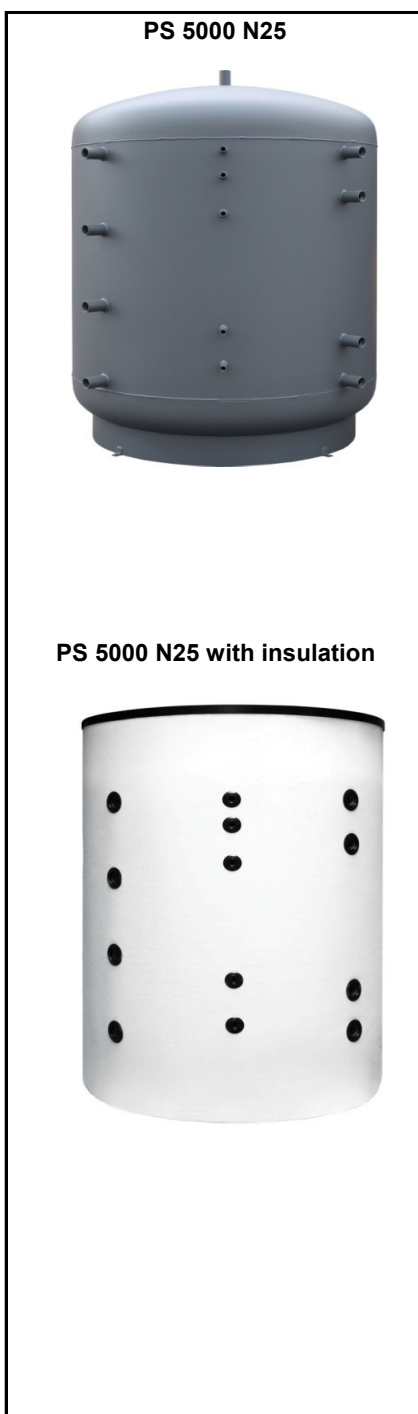


PS 5000 N25 Thermal Store

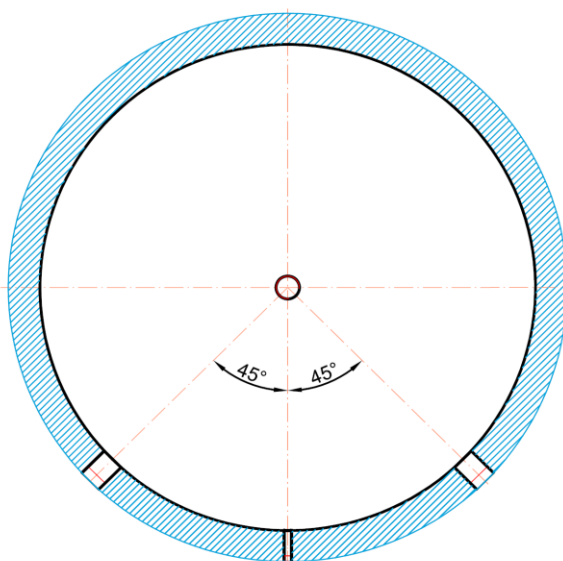
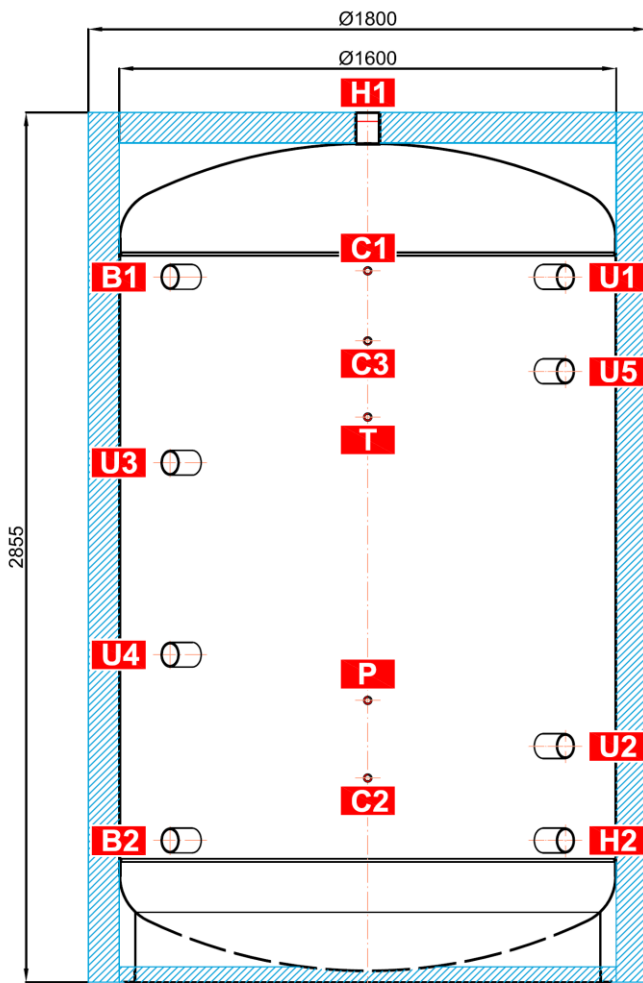


Main features	
Application	storage and subsequent distribution of thermal energy from solid-fuel boilers, heat pumps or other heat sources
Description	welded steel tank
Working fluid	water, water-glycol mixture (max. 1:1), water-glycerine mixture (max. 2:1), thermal oil
Code	
Thermal Store	14 331
Insulation	16 356
Energy Efficiency Data (as per EC Regulation No. 812/2013)	
Energy efficiency class	PS 5000 N25 with insulation N/A
Standing loss	319 W
Storage volume	4989 l
Technical Data	
Total tank volume	4989 l
Max. working temperature in Thermal Store	95 °C
Max. working pressure in Thermal Store	3 bar
Materials	
Tank material	S235JR
Tank perimeter insulation	fleece
Tank perimeter insulation's outer surface	PU leather
Top and bottom tank insulation	fleece
Dimensions, Tipping height, Insulation thickness, Weight	
Tank diameter	1600 mm
Tank diameter with insulation	1800 mm
Tank overall height	2855 mm
Tipping height without insulation	2970 mm
Tank perimeter insulation thickness	100 mm
Bottom insulation thickness	50 mm
Top insulation thickness	120 mm
Empty weight without insulation	485 kg
Accessories	
El. heating element (models)	ETT-A,C, D, F, G, L, M
Heating elem. max. length / output	955 mm / 12 kW

PS 5000 N25 Thermal Store

Dimensions

Tipping height without insulation 2970 mm.



TAPPINGS

pos.	connection	height [mm]
Heat sources		
B1	G 2,5" F	2315
B2	G 2,5" F	465
Heating system		
H1	G 2,5" F	2855
H2	G 2,5" F	465
Control and safety		
C1	G 1/2" F	2335
C2	G 1/2" F	670
C3	G 1/2" F	2105
T	G 1/2" F	1855
P	G 1/2" F	925
Universal inlet/outlet		
U1	G 2,5" F	2315
U2	G 2,5" F	775
U3	G 2,5" F	1705
U4	G 2,5" F	1075
U5	G 2,5" F	2005