
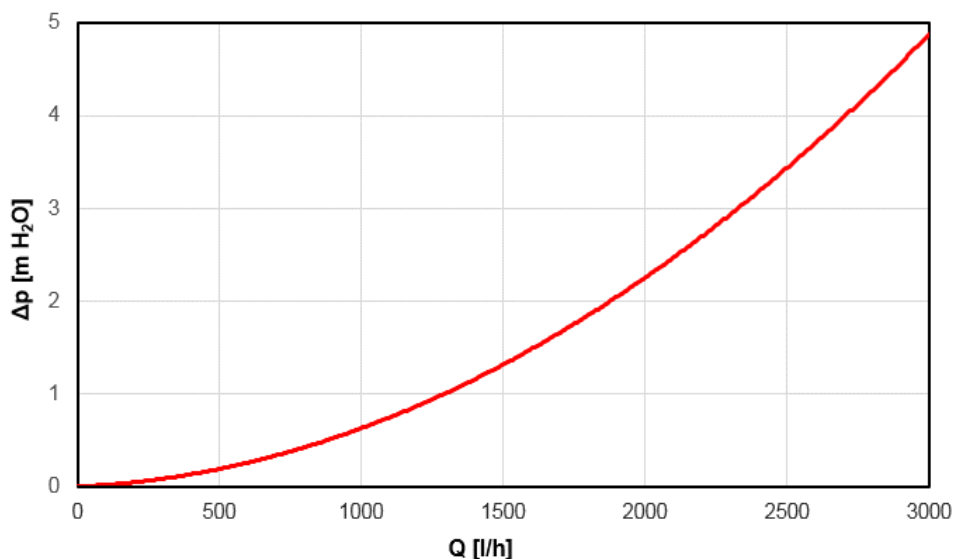


RGC 120 H Hot Water Storage Tank

<p style="text-align: center;">RGC 120 H</p> 	Main features	
	Application	water heating through heat exchanger and by el. heating elem. (optional)
	Description	inner surface and heat exchanger enamelled, tank is insulated
	Working fluid	water (tank), water, water/glycol mixture (max. 1:1) or water-glycerine mixture (max. 2:1) (heat exchanger)
	Code	10 493
	Energy Efficiency Data (as per EC Regulation No. 813/2013)	
		RGC 120 H
	Energy efficiency class	C
	Standing loss	69 W
	Storage volume	114 l
Technical data		
Total volume	120 l	
Heat exchanger volume	6 l	
Max. working pressure in tank	6 bar	
Max. working pressure in HE	10 bar	
Max. temperature in tank	100 °C	
Max. temperature in HE	100 °C	
Heat exchanger surface area	1.2 sqm	
Ambient conditions		
Ambient temperature	2 to 45 °C	
Max. relative humidity	80%	
Hot water heating from 10 to 45°C at heating water temp. of 60°C		
Heat exchanger	1020 l/h (41,5 kW)	
Dimensions, weight		
Tank height	1140 mm	
Tank diameter	Ø 400 mm	
Tank dimensions w. insulation	□ 460 mm	
Tipping height	1205 mm	
Empty weight	62 kg	
Materials		
Tank	S235JR, inner side enamelled	
Heat exchanger	S235JR+N, outer surface enamel	
Outer mantle	S235JR, outer surface coated	
Insulation	PU foam	
Accessories		
El. heating element	models ETT-A, D, F, G, M	
Heating elem. max. length / output	383 mm / 4,5 kW	
Electronic anode rod	code 9 176	
Spare parts		
Magnesium anode rod, l = 500 mm	code 448	

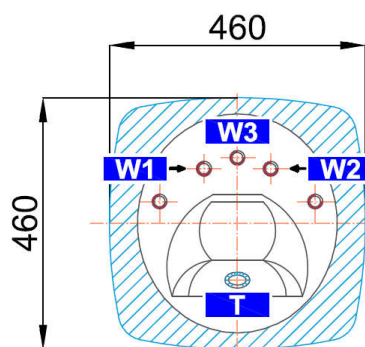
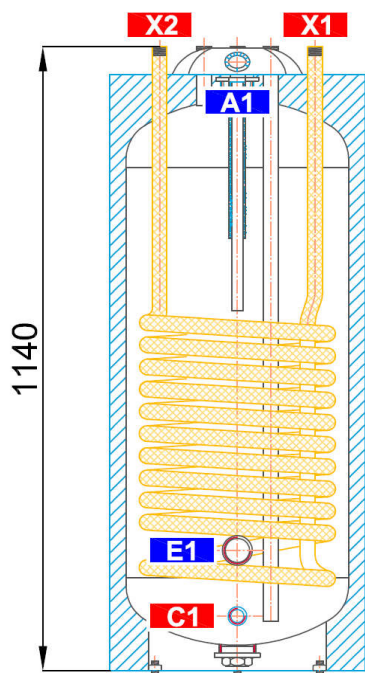
RGC 120 H Hot Water Storage Tank

Heat exchanger pressure drop



Dimensions

Tipping height 1205 mm.



TAPPINGS

pos.	connection	height [mm]
DHW heating		
W1	G 3/4" M	1140
W2	G 3/4" M	1140
W3	G 3/4" M	1140
El. heating elements		
E1	G 6/4" M	220
Control and safety		
C1	G 3/4" M	100
T	G 1/2" F	1115
Heat sources		
X1	G 3/4" M	1140
X2	G 3/4" M	1140
Anode rod		
A1	G 5/4" F	1090