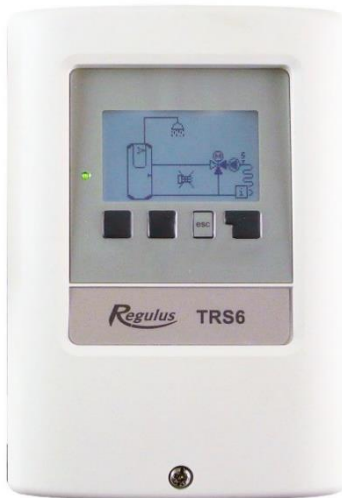


## TRS6 K Controller

### Main Features

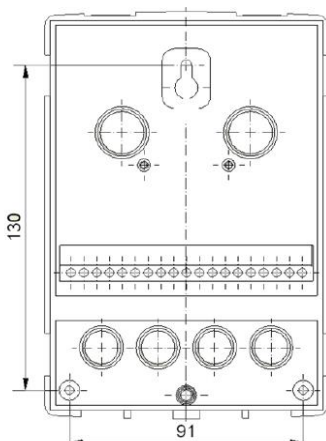
Description	<ul style="list-style-type: none"> <li>- permits control of up to 2 heating circuits; control of DHW heating and control of high-efficiency pumps via PWM signal</li> <li>- ensures control of automatic operation of optional heat sources (solar thermal systems, solid-fuel boilers, auxiliary electric and gas-fired heat sources)</li> <li>- 3x relay output</li> <li>- 2x PWM output</li> <li>- 6 temperature sensors (5 included in supply)</li> </ul>
Installation	on a wall
Code	<b>16821</b>

TRS6 K Controller



### INSTALLATION DIMENSIONS

- 3x 3,5 x 30
- 3x Ø6



### Electric Data

Voltage	230 VAC ± 10%
Frequency	50-60 Hz
Consumption	0.5 - 2.5 W
Internal fuse	T 2A / 250 V slow-blow
IP rating	IP 40
El. protection class	II

### Energy Data (as per Commission Delegated Regulation No. 811/2013)

Controller class	VI
Contribut. to season. space heat. energy effic.	4,00%

### Inputs & Outputs

Mechanical relays R1, R2, R3	460 VA for AC1; 460 W for AC3
0-10 V output	10% tolerance, 10 kOhm
PWM output	1 kHz, 10 V
Pt 1000 sensors	measur. range -40 °C to 300 °C
Network connection	CAN bus *

\* can be used together with Caleon Room Unit (code 17150)

### Number of Inputs / Outputs

Mechanical relay 460 VA (AC1); 460 W (AC3)	3x (R1, R2, R3)
PWM or 0-10 V output	2x (V1, V2)
Pt 1000 sensors	6x (S1 to S6)

### Ambient Conditions

Operating temperature	0-40 °C
Storage temperature	0-60°C
Air humidity	max. 85% RH at 25°C
Storage air humidity	no moisture condensation permit.

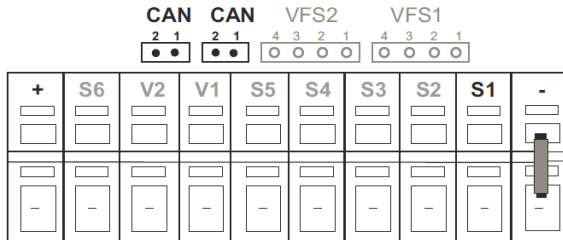
### Other Data

Housing material	ABS plastic
Installation	on a wall
Overall dimensions	163 mm x 110 mm x 52 mm
Display	fully graphic, 128 x 64 px
Control	4 keys
LED	multicolour red/green
Clock backup time	24 h

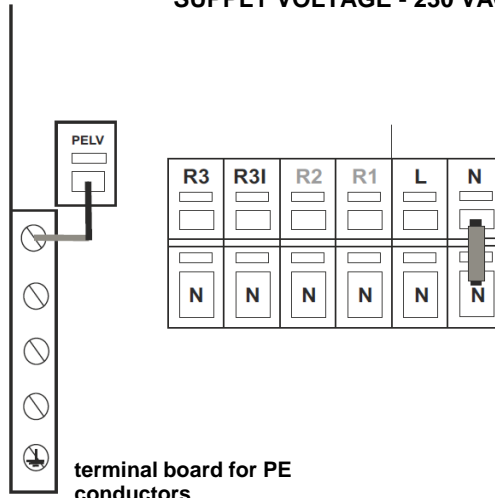
TRS6 K Controller

Terminal Board Wiring Diagram

EXTRA LOW VOLTAGE - (24 VDC max.)



SUPPLY VOLTAGE - 230 VAC, 50-60 Hz



PCB connections:

- CAN** CAN bus (1 - high, 2 - low)
- VFS1** unoccupied
- VFS2** unoccupied

Terminal board connections:

- +** 24 V supply (e.g. for Caleon Room Unit)
- S6** temperature sensor 6 (outdoor)
- V2** PWM or 0-10 V output
- V1** PWM or 0-10 V output
- S5** temperature sensor 5
- S4** temperature sensor 4
- S3** temperature sensor 3
- S2** temperature sensor 2
- S1** temperature sensor 1
- GND jumper for sensors, V1, V2 outputs and 24 V supply

Terminal board connections:

- R3** relay 3 (switched contact)
- R3I** relay 3 (supply live)
- R2** relay 2
- R1** relay 1
- L** external live L
- N** neutral N

Accessories

Pt 1000 sensors for sheath, 4 m cable	included in supply (4 pcs)
Outdoor sensor	included in supply (1 pc)
Solar sensor	not included in supply (1 pc), code 9108
Caleon Room Unit	not included in supply, code 17150

Temperature resistance table for Pt1000 sensors

°C	0	10	20	30	40	50	60	70	80	90	100
Ω	1000	1039	1077	1116	1155	1194	1232	1270	1308	1347	1385

TRS6 K Controller

Chart of possible installations controlled by TRS6 K											
Variant*	Thermal Store	DHW Heating	Solid-fuel Boiler	Solar Thermal System	Aux Heating - DHW	Aux Heating - Thermal Store	Heating Circuit 1 - mixed	Heating Circuit 1 - unmixed	Heating Circuit 2 - unmixed	Heat Exchange - Th.St. - DHW	Heat. Circuit Return Preheating
1	HSK DUO	✓			✓	✓	✓				
2	HSK DUO	✓	✓		✓	✓	✓				
3	HSK DUO		✓				✓				✓
4	HSK DUO	✓		✓	✓	✓	✓				
5	PS		✓			✓	✓				
6	PS	✓			✓	✓	✓			✓	
7	PS	✓	✓				✓			✓	
8	HSK DUO						✓				✓
9	PS	✓		✓			✓			✓	
10	PS	✓		✓	✓	✓	✓				
11		✓	✓		✓			✓		✓	
12		✓	✓			✓		✓		✓	
13							✓				
14							✓		✓		

KEY TO CHART: ✓ default, ✓ optional

\* Diagrams for separate hydraulic variants are shown in the Manual for TRS6 K (numbering of hydraulic variants is identical in the Data Sheet and Manual)