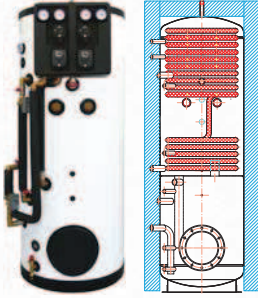


■ THERMAL STORES WITH DHW HEATING AND COMPACT BOILER ROOM

VEGA 390 Thermal Stores

Thermal Store with separate accumulation of thermal energy for space heating and DHW heating in a stainless steel tube heat exchanger. Ports with 3-way diverter valves for direct connection to a heat pump. A pump station for 1 or 2 heating circuits with high-efficiency pumps and special bivalent 4-way valves for the best utilization of renewable sources included in supply. Ready to be fitted with a solar pump station and a solar heat exchanger installed into a flange. These Thermal Stores come with an advanced three-layer insulation featuring excellent insulation properties, temperature resistance and neat appearance.



Thermal Store:

1 G 1/2" F top tapping
2 G 6/4" F side tappings
1 lower welded flange, 210mm inner diam.

- for air release
- to install el. heating elements
- to install finned tube heat exchangers

Immersed stainless steel DHW heat exchanger:

2 G 1" M side tappings

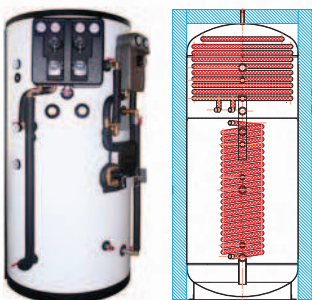
- heat exchanger in, out

All the other tappings are already fitted with pump stations, sheaths for controller sensors, thermometers, pressure gauges and a 3 bar safety valve.

No. of heating circuits	Height [mm]	Diam. with insulation [mm]	Total tank volume [l]	DHW HE surface area [m ²]	Code
1	1905	750	396	6	12 967
2	1905	750	396	6	12 968

VEGA 1000 Thermal Stores

Thermal Store with separate accumulation of thermal energy for space heating and DHW heating, two-stage DHW heating in two stainless steel tube heat exchangers – preheating in the bottom tank section and final heating in the upper section. DHW recirculation possible over the upper heat exchanger. Twin-line solar pump station and a solar plate heat exchanger with diverter valves for priority DHW heating from solar thermal system, pump station for 1 or 2 heating circuits with high-efficiency pumps and special bivalent 4-way valves for the best utilization of renewable sources, pool heating possible either from Thermal Store or directly from a solar thermal system. These Thermal Stores come with an advanced three-layer insulation featuring excellent insulation properties, temperature resistance and neat appearance.



Thermal Store:

5 G 6/4" F side tappings
2 G 6/4" F side tappings
1 G 1/2" F top tapping

- to connect heating system and heat sources
- to install el. heating elements
- for air release

Immersed stainless steel DHW heat exchangers:

4 G 1" M side tappings

- heat exchangers in, out

All the other tappings are already fitted with pump stations, sheaths for controller sensors, thermometers, pressure gauges and a 3 bar safety valve.

No. of heating circuits	Direct solar pool heating	Height [mm]	Diam. with insulation [mm]	Total tank volume [l]	DHW HE surface area [m ²]		Code
					upper	lower	
1	NO	2080	1000	921	6	3	13 453
2	NO	2080	1000	921	6	3	13 278
2	YES	2080	1000	921	6	3	13 454