

**Instructions for Use,
Installation and Maintenance**

TARTARUGA V4V CLEANING PUMP



Manual index

1.0 General information for users.....	3
1.1 CE conformity statement.....	3
1.2 Guarantee terms and conditions.....	4
1.3 General and safety warnings.....	5
2.0 Technical data.....	6
3.0 Exploded view.....	7
4.0 Assembly and usage.....	8
5.0 Pump maintenance.....	8
6.0 Fittings.....	9
7.0 Your contribution to environmental protection.....	10
7.1 Packaging disposal.....	10
7.2 Product disposal.....	10

1.0 General information for users

1.1 CE conformity statement

Manta Ecologica S.r.l.

Indirizzo: Viale Archimede n. 45 - 37059 – Santa Maria di Zevio (VR)

Dati Fiscali: P.Iva: 00780420964 - Numero REA: MB - 1014132

DECLARES

This products mod. TARTARUGA V4V has been designed and constructed in accordance with the following European directives (including all applicable amendments):

Directive 2006/42/EC: Machine

Directive 2006/95/EC: Low Voltage

Directive 2004/108/EC: Electromagnetic Compatibility

Directive 2002/95/EC: RoHS

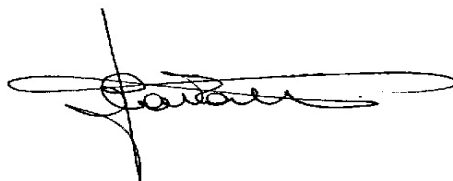
We also declares that the electrical equipment of product conforms to the following standards:

CEI-EN 60034-1: Rotating electrical machines. Part 1: Rating and performance.

Place: Santa Maria di Zevio (VR)

Date: 27/11/2012

Company director – Mr. Giordano Cavalli



1.2 Guarantee terms and conditions

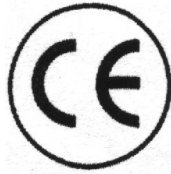
Conditions:

Manta Ecological S.r.l. guarantees any parts of the equipment in case of production defects, provided that the warranty card is filled out in its entirety and accompanied by a document proving the date of purchase (invoice, etc.).

Limits:

The warranty is limited to the supply or repair of defective parts or materials that must be returned at the customers cost port to the local dealer's address. The warranty does not cover damage resulting from misuse, inappropriate use of chemicals, and normal wear due to usage.

The guarantee is void in case of disregard to maintenance and safety instructions in this manual.



Viale Archimede n. 45 – località Campagnola
37059 – S. Maria di Zevio – Verona

tel. 045 8731511 fax 045 8731535
www.h2online.it - e-mail : info@h2online.it

1.3 General and safety warnings

Essential to read these instructions:

This equipment complies with current safety standards. However, improper use can cause damage to persons and / or properties.

Before using the pump for the first time, read this instruction booklet, it contains important information on safety, operation and maintenance of the machine. In this way you avoid risks to people and properties damage.

The hereby manual is intended both for users and pump technical maintenance professionals as in sections expressly indicated . Before performing any operations, both users and qualified repairers must carefully read the instructions contained in this publication.

Users can only carry out relevant operations described in this manual and must not attempt any extraordinary maintenance which is strictly duty of qualified technicians.

Failing to comply with these warnings may result in guarantee being void.

Keep these instructions and make sure that are read by all users.

Technical safety:

Before installing the machine, check that there are no visible damages. Do not install or operate the pump if any damages are detected.

The electrical safety is only ensured if the machine is connected to a power supply in conformity with EU safety standards and suitable for technical features as in this manual.If in doubt do not start the machine and seek advice of a electrical technician.

Manta Ecological S.r.l. can not be held liable for damages due to the interruption or even absence of the protective conductor.

Incorrect repairs may expose you to hazards that are not predictable, for which the manufacturer assumes no responsibility. Any repairs can be made only by authorized technical service of Manta Ecological S.r.l. and appointed dealers, otherwise any damages in case of failures due to non-compliance may void the warranty.

Replace any faulty or defective parts with original parts, only this way Manta Ecological S.r.l. can guarantee full compliance with the quality standards required.

Symbols used:



indicates a warning,a note of key functions or useful information. Give full attention to blocks of text indicated by this symbol



indicates that a manual adjustment may also include the use of portable equipment or tools



risk of danger for the user



prohibited

Correct usage:

TARTARUGA V4V pumps perform at their best when used in conjunction with Manta Ecologica descaling products. All this chemical products and their solutions are acidic. Please follow carefully usage and safety information on technical data sheet/label of product. Suitable protective clothing, gloves and goggles should be worn.



Do not expose pump to strong heat, lamps and open flames. Do not leave pump unattended while working.



Tank lid must be loosened, during descaling operation, in order to allow correct tank venting.

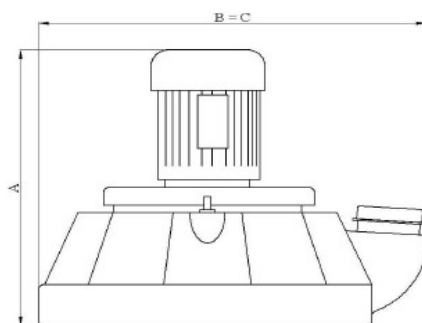


Before inserting the plug into the mains supply check that the switch is off. Also make sure that pump body is correctly tightened to the tank.

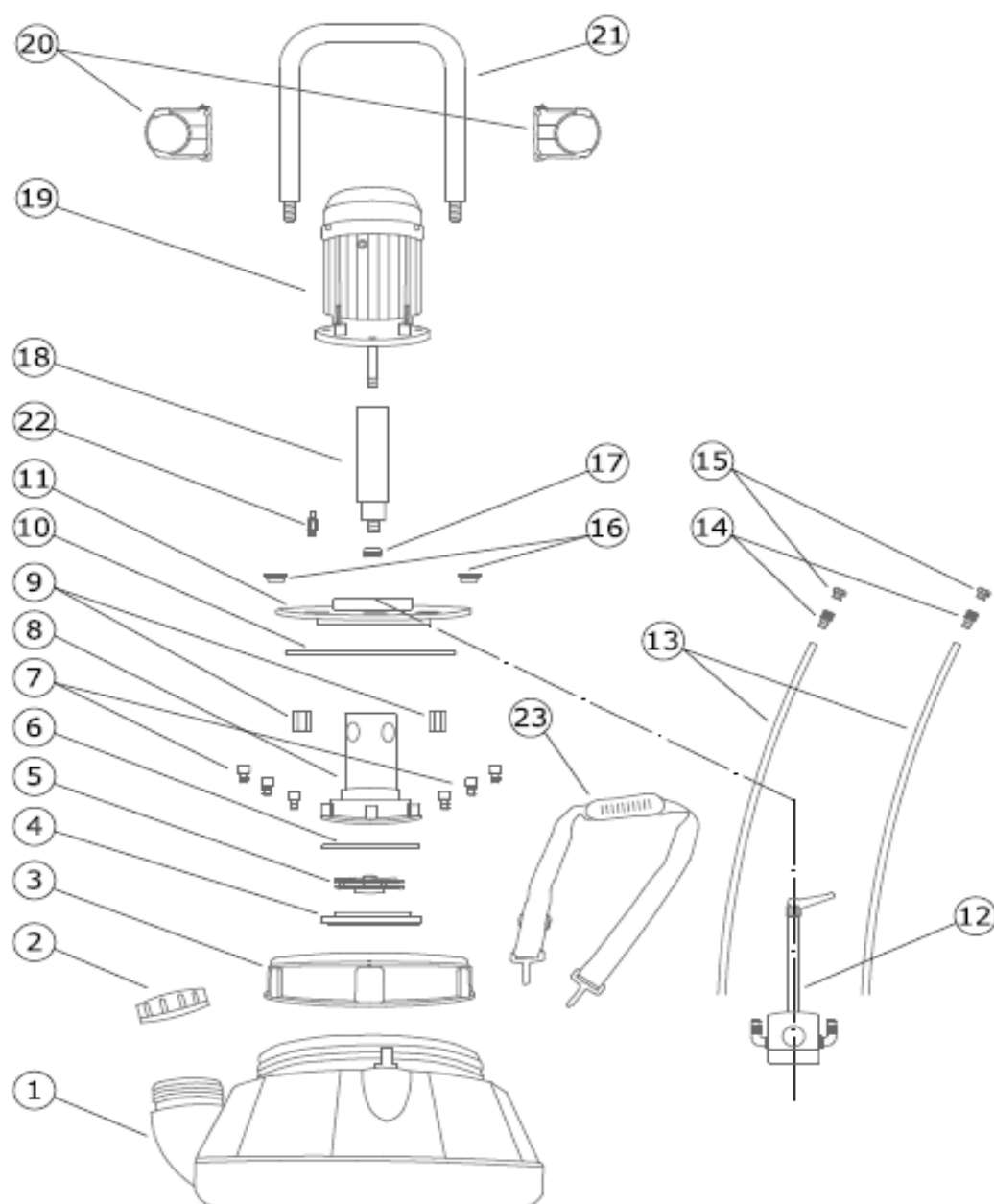
Shut firmly with supplied stoppers pumps hoses when finished operations and disconnect pump, in order to prevent chemicals spillage.

2.0 Technical data

Model	TARTARUGA V4V
Single phase electric motor	220 V–50 Hz / 0,22 hp
Weight	4,7 Kg
Protection	IP 55
Max. flow rate	56 l/min
Head	10 m
Connections (in/out)	1/2"
Tank capacity	5 liters
Max. temp.	50 °C
Power	0,22 hp / 0,165 kW
Dimensions	(A) 350 mm (B) 330 mm (C) 300 mm



3.0 Exploded view



- 1 – TANK
- 2 – TANK LID
- 3 – RING NUT
- 4 – IMPELLER COVER
- 5 – IMPELLER
- 6 – O-RING 98x3,53 mm
- 7 – PLASTIC SCREW M6 x 20 mm
- 8 – PUMP BODY
- 9 – PLASTIC NUT
- 10 – FLANGE O-RING
- 11 – FLANGE
- 12 – FLOW INVERTER
- 13 – HOSE 16x22
- 14 – JOINT 8120 1/2"x16 mm
- 15 – LID 8200 1/2"

- 16 – FAIRLEAD FG 412
- 17 – FAIRLEAD FG 028
- 18 – PVC MOTOR SHAFT
- 19 – MOTOR
- 20 – HOSE HOLDER
- 21 – HANDLE
- 22 – VENT VALVE
- 23 – SHOULDER STRAP + CARABINERS

4.0 Assembly and usage

In case of pipework descaling, first check if minimum flow is available for acidic solution to circulate, otherwise operation is not possible.



Disconnect flow and return of equipment to be descaled, empty all water inside, and finally connect pump with supplied flexible hoses.

Open the tank and add water up to half tank (please notice that operational temperature during descaling must never exceed 50 °C).

Connect the pump to the mains and switch it on and start adding slowly descaling chemical, until required concentration is obtained. This operation allow correct product mix.

Please follow carefully usage and safety information on technical data sheet/label of product. Anyway, maximum operational time (continuously) should not exceed 2 hours. Please allow 1/2 hour before resuming operations.

ATTENTION: models fitted with flow inverter (V4V) allow circulation both ways, thus obtaining best descaling result.

In the case of excessive formation of foam while cleaning, switch off the pump and wait until it dies down. Dilution of solution with water may be necessary if foaming persists.

After descaling process, drain the acidic solution, rinse the system with alkaline solution (Manta N-105 neutralizer) and flush the descaled equipment thoroughly with water.

5.0 Pump maintenance

Once descaling process is over, switch off the pump and unplug from mains. Wait until the solution inside the descaled equipment has completely returned into pump tank. Do not leave pump unattended while working.



As for descaled equipment also pump requires acidic solution neutralization. Check that pH value is between 6,5 and 9,5. For safe and sure result, we recommend to use our neutralizing chemical *Manta N-105*. Flush the pump body and tank thoroughly with water.



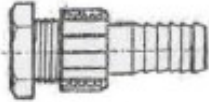
NEVER LEAVE ACIDIC SOLUTION INSIDE THE TANK: fumes may seriously damage pump components.

ATTENTION: Failing to comply with these warnings may result in guarantee being void.

6.0 Fittings

* Code 180203003

BUSTA TERMINALI



Joint 1/2"x16 + lid + metallic cable tie (x 2 pz)

* Code 180203001

BUSTA "A"



Nipple 1/2" (x 2 pz)



Nipple 1/2"-3/4" (x 2 pz)
Nipple 1/2"-3/8" (x 2 pz)



Reduction 1/2"-3/8" (x 2 pz)

7.0 Your contribution to environmental protection

7.1 Packaging disposal

Packaging is devised to protect machine during transport. Materials used have been selected according to environment respect and disposal ease hence they are recyclable. Reintroduction of packaging into materials supply chain allow raw materials saving and waste reductions.

7.2 Product disposal

Pursuant to the European Directives 2002/95/EC, 2002/96/EC and 2003/108/EC, on restricting the use of hazardous substances in electric and electronic equipment and on the disposal of waste material. The crossed out wheellie bin symbol applied to equipment or packaging means that the product should be collected separately from other types of waste at the end of its useful life.



User shall convey machine that has reached the end of its life cycle to appointed separate collection sites for obsolete electric and electronic equipment.

Correct separate collection and the subsequent recycling, treatment and environmentally compatible disposal of discarded equipment is of aid in avoiding possible negative effects for the environment and people's health and facilitates the re-use or recycling of the materials of which the equipment is made.



Illegal disposal of this product on part of the owner will give way to the application of administrative fines as provided by current laws.

03/2014



REGULUS spol. s r.o.
Do Koutů 1897/3
143 00 Praha 4
CZECH REPUBLIC

<http://www.regulus.eu>
E-mail: sales@regulus.cz