

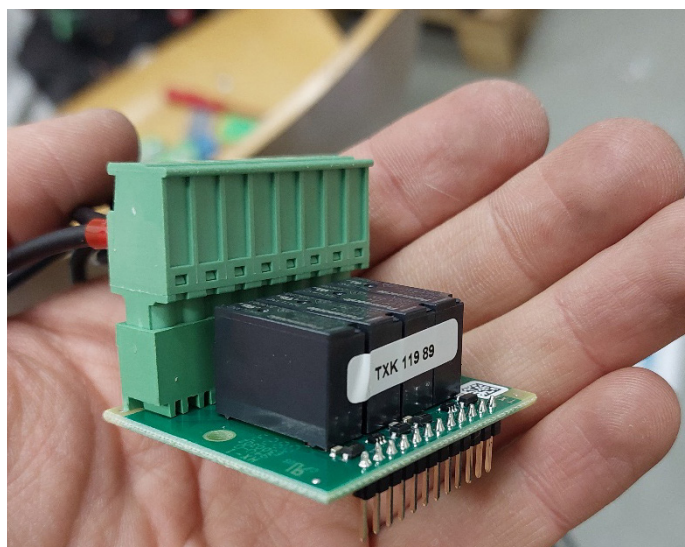
4 RELAY MODULE SET

Installation and Operation Manual
Set for connecting 4xRO module (5A)
to RegulusHBOX K

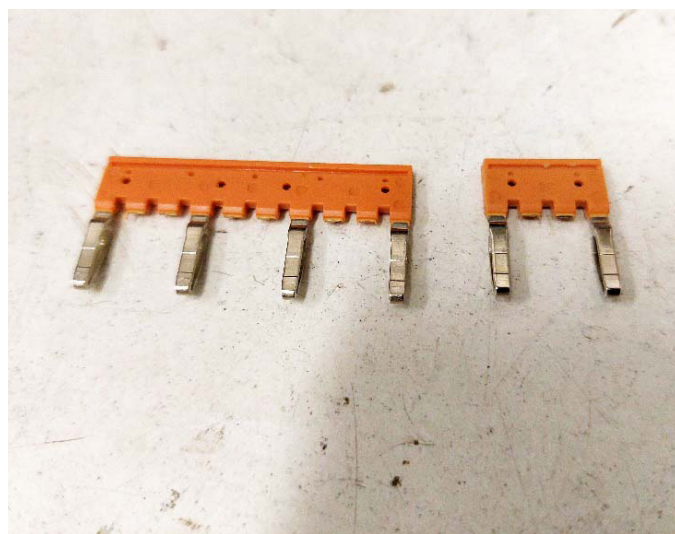
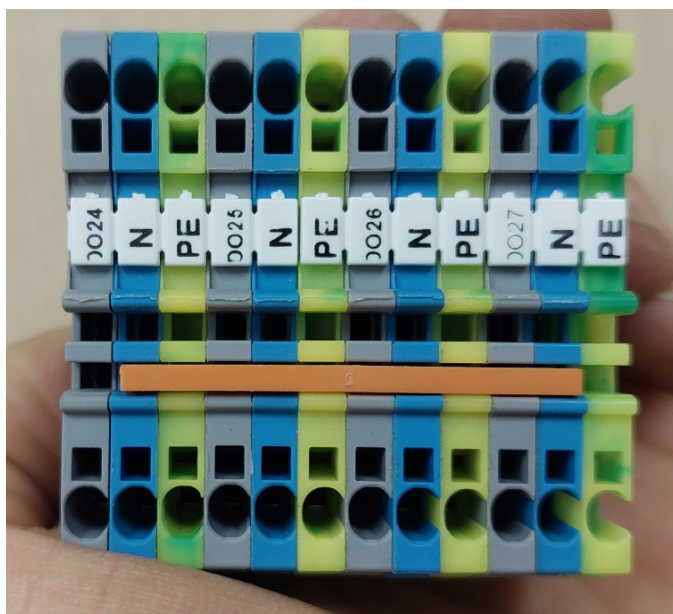
EN

Installation of 4-relay module into HBOX-K unit

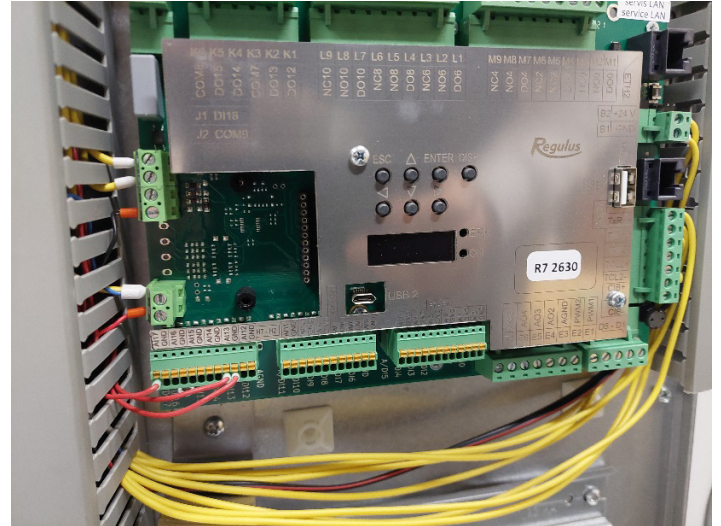
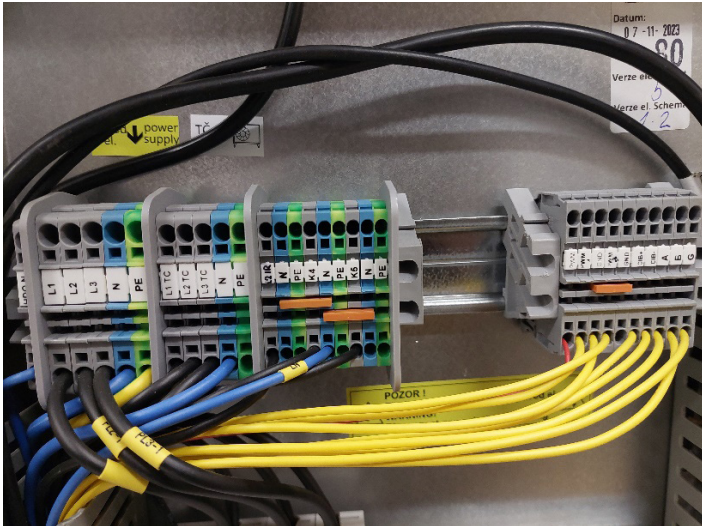
- 1) Prepare the 4-relay module with terminal block, screw the right wires into it. Interconnect mutually the positions N1, N3, N5 and N7. Connect also the wire marked IRL-7 into the pos. 7. Connect the respective wires marked DO24, DO25, DO26 and DO27 to even positions N2, N4, N6, N8.



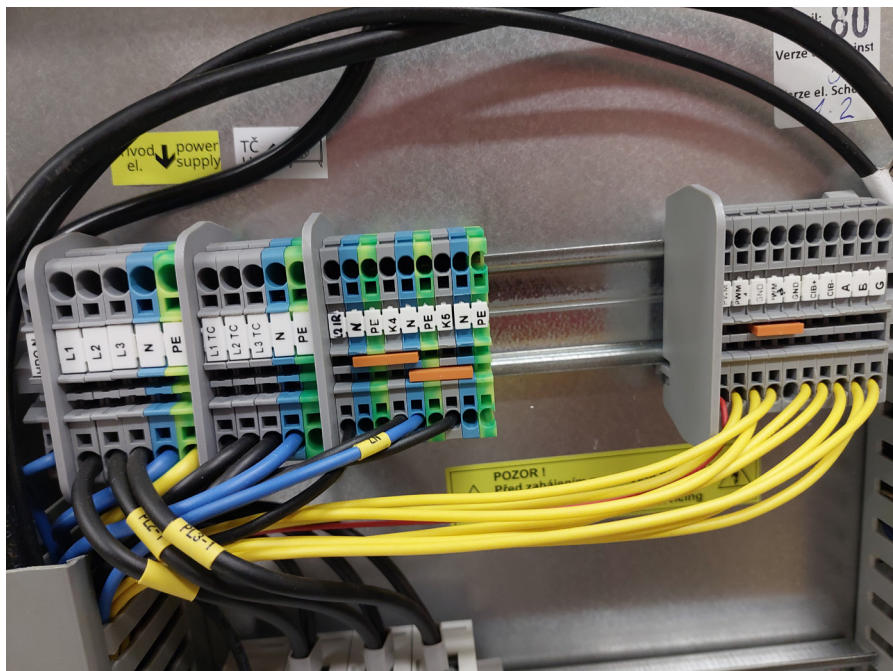
- 2) Prepare the terminal blocks PYK1,5 and place labels on them – see the pic. For the four-fold jumper bridge, remove the middle teeth by wobbling.



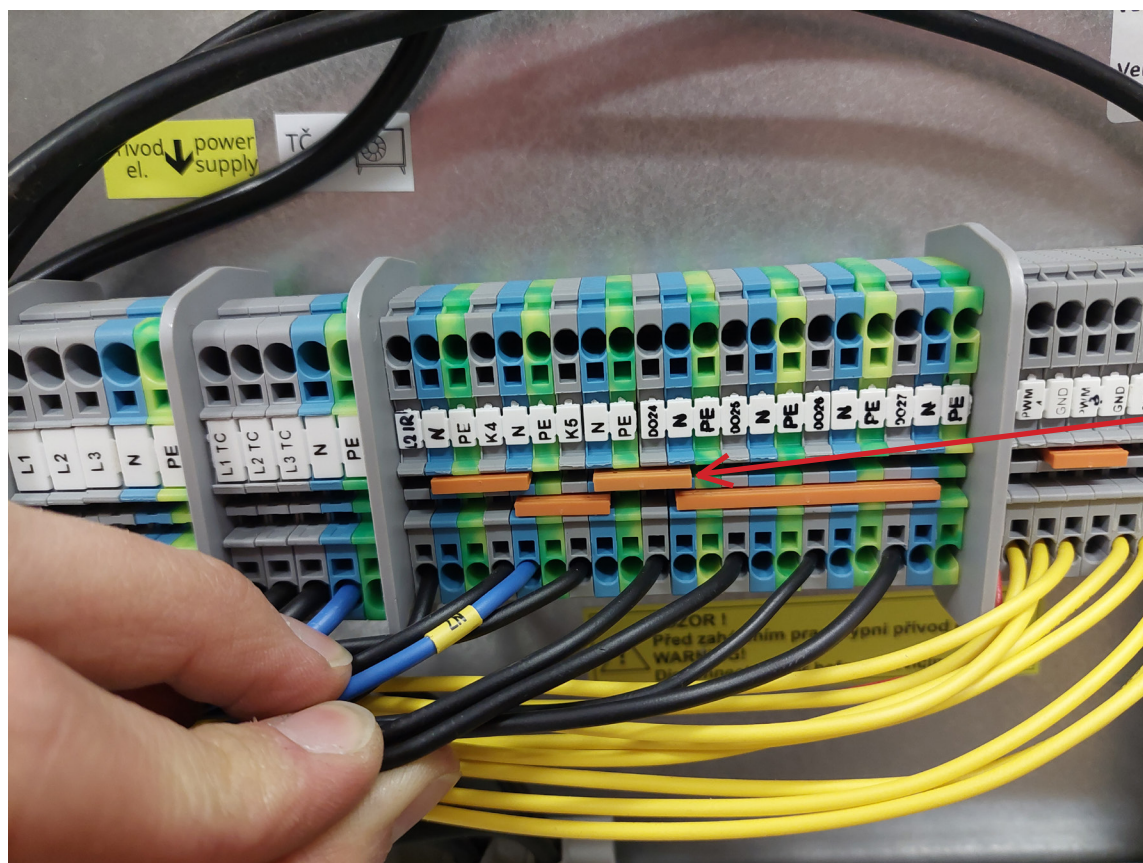
- 3) By default, RegulushBOX K has the terminal block layout on the top rail as shown below. There is no 4-relay module fitted on the controller board – see the pic.



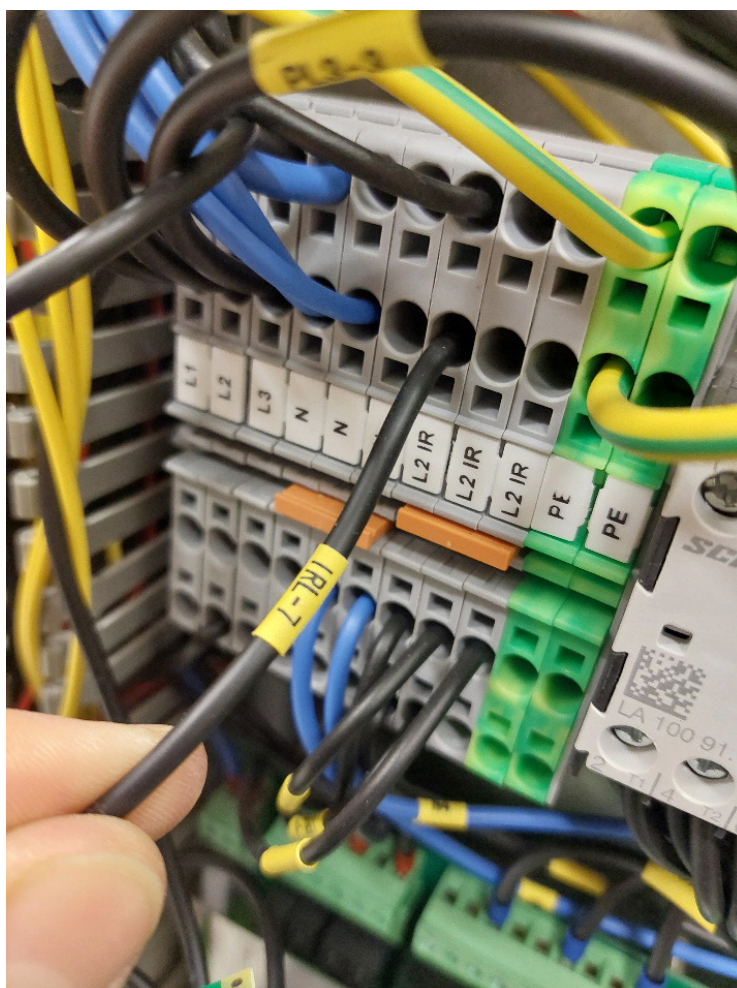
- 4) Prepare the upper DIN rail. First unscrew both the end terminals located in the middle of the rail (i.e. to the right of the bulkhead and to the left of PWM3). Slide the bulkhead to the right to the PWM3 terminal, see the pic. Then insert the pre-prepared terminals DO24 to DO27, N, PE into the resulting gap.



- 5) Connect the 4 wires marked DO24 to DO27 from the 4-relay module to the prepared terminals. Connect the four-fold bridge connecting all N terminals in this section - see the pic.



- 6) Connect the last remaining wire marked IRL 7 to the main L2 IR terminal block.



- 7) Install the 4-relay module in the place designated for its connection in the IR controller and fix it using two M3 x 4 PH screws.



REGULUS spol. s r.o.

E-mail: sales@regulus.eu

Web: www.regulus.eu

