

Installation and Operation Manual
HEATING CABLE FOR CONDENSATE DRAIN
OF CTC HEAT PUMP

The kit is intended for adding a heating cable to a heat pump condensate discharge. The heating cable shall be wired via a fuse on the heat pump terminal board. The heating cable is then being switched in the same manner as the heating element in the condensate tray.

Instructions for a heating cable kit installation

Prior to the installation check all parts. Pay special attention to the heating cable itself. Check it and verify that its insulation is intact in its entire length and no other defects are visible.

1. Disconnect the heat pump from power supply.
2. Unscrew the plastic cover of the electronics compartment.
3. Insert the fuse holder on the DIN rail next to the WAGO connectors.
4. Wire one lead of the heating cable to the fuse holder and the other one to the N terminal, see Fig. 1a and 1b.
5. Use the connecting lead to interconnect the Relay 2 Out2 output with the other side of the fuse holder.
6. From the electronics side, run the heating cable through the grommet.
7. Let the cable sink into the condensate tray.
8. The heating section of the cable should not touch any other cables on its way. The heating section starts from the colour mark on the cable.
9. Remove the metal cover from the condensate tray and run the cable through into the condensate discharge, see Fig. 2.
10. Check the wiring, all other leads and power supply. If everything is OK, re-install the heat pump cover.

Safety instructions

- Installation may be done by qualified staff only. The wiring shall respect locally valid standards and rules.
- When installing the heating cable, take care to shut off the electricity to the heat pump first.
- **While pulling the heating cable through, make sure its insulation does not get damaged. The cable shall not touch any sharp edges that could cause damage to it during the heat pump operation.**
- The fuse holder contains 2 melt fuses 2A/230V. By bridging the fuses you risk the electronics being destroyed and your complete warranty turning null and void.
- This heating cable contains no control element, it is controlled by the respective heat pump. It is not designed for uninterrupted operation.

Warranty

This heating cable has been manufactured and tested in order to meet high quality and safety demands. A legal warranty of 2 years from the date of purchase applies.

Neither warranty nor responsibility shall cover personal injuries or material damage caused by the following reasons:

- Failure to respect this Instruction manual
- Improper installation, commissioning, maintenance or operation
- Wrong repairs
- Unauthorized construction modifications
- Any additional device has been installed with the heating cable that had not been tested together with it
- Damage caused by continuing operation of the heating cable despite its obvious defect
- Non-original spare parts were used
- Using the cable for other purposes than intended
- Force majeure

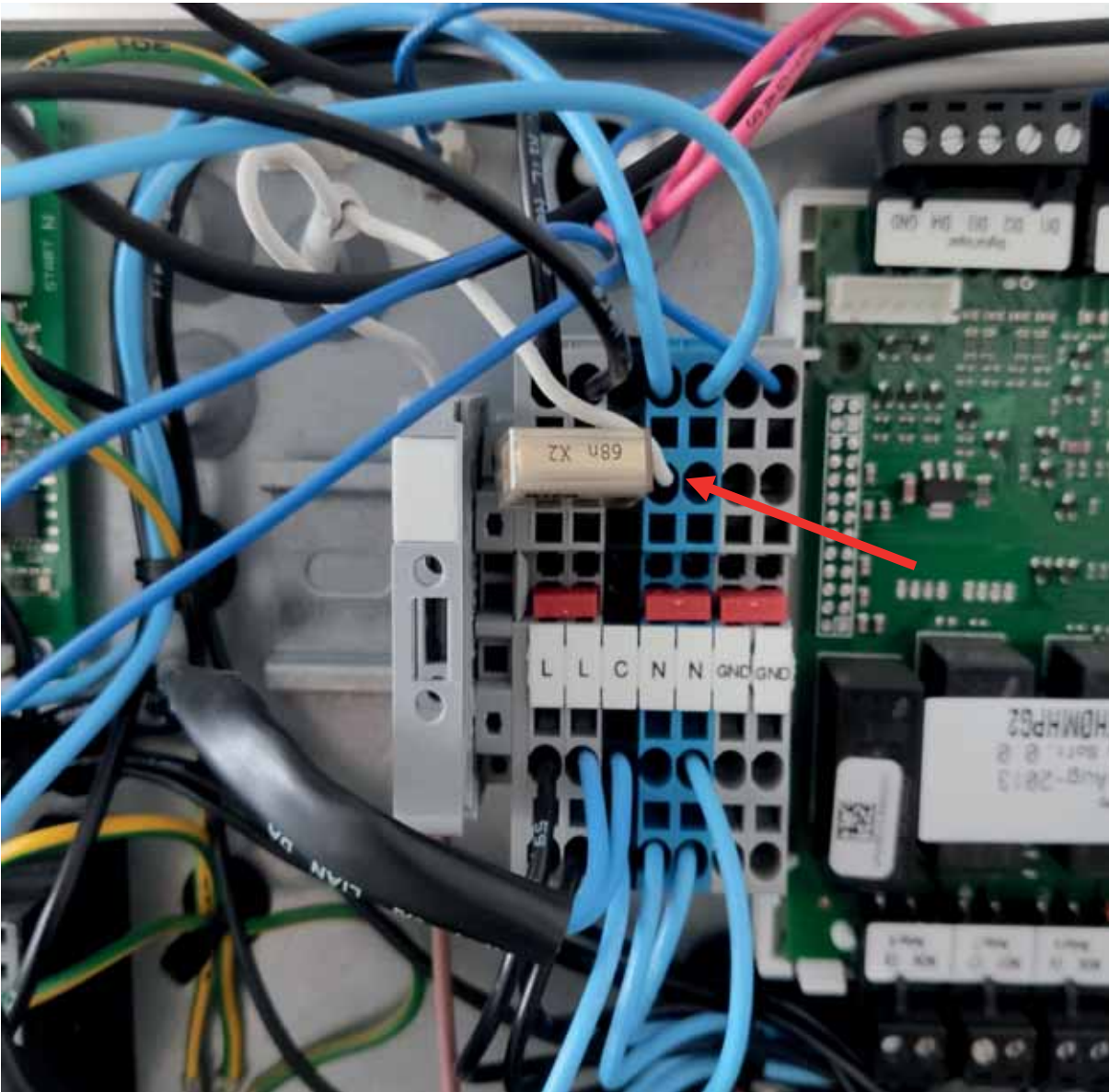


Fig. 1a – Heating cable wiring to the terminal board – CTC 400 series heat pump



Fig. 1b – Heating cable wiring to the terminal board – CTC 600 series heat pump



Fig. 2 – Running the heating cable through the condensate tray

Disposal of the heating cable

IMPORTANT INFORMATION ON DISPOSAL IN COMPLIANCE WITH THE EUROPEAN DIRECTIVE 2002/96/ES

Discarding old electrical and electronic equipment (valid for EU member states and other European countries with organized separate waste collection).

European Directive 2002/96/EC requires that the equipment bearing this symbol on the product and/or its packaging must not be disposed of with unsorted municipal waste. The symbol indicates that this product should be disposed of separately from regular household waste streams. It is your responsibility to dispose of this and other electric and electronic equipment via designated collection facilities appointed by the government or local authorities. Correct disposal and recycling will help prevent potential negative consequences to the environment and human health. For more detailed information about the disposal of your old equipment, please contact your local authorities, waste disposal service, or the shop where you purchased the product.



WEEE registration number: 02771/07-ECZ