

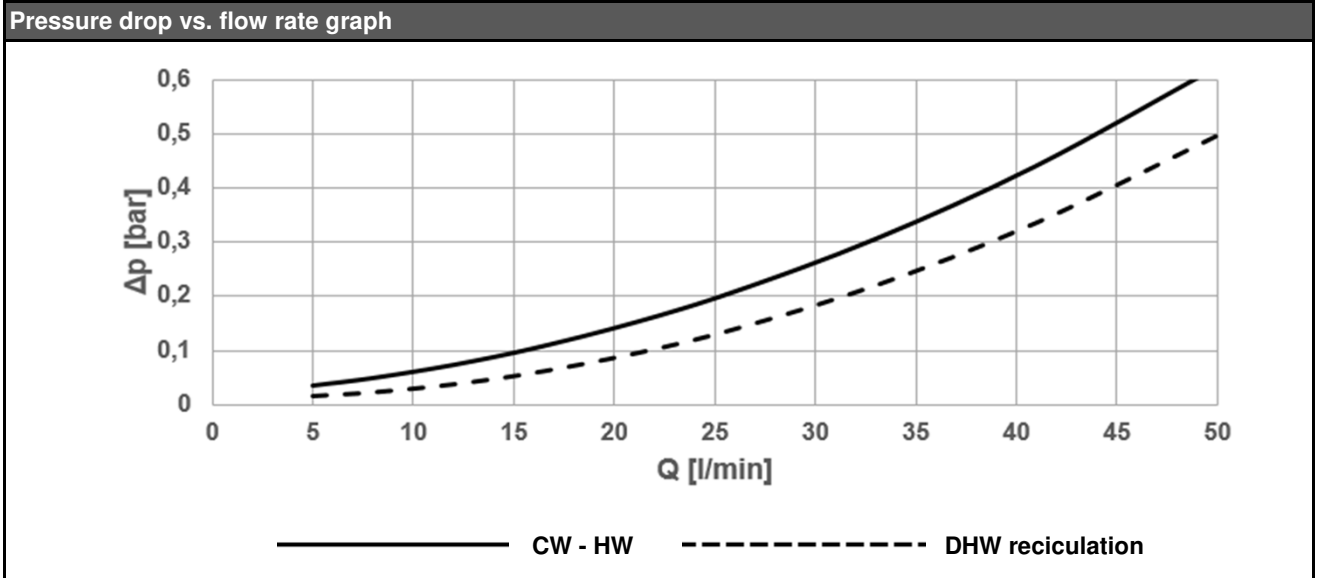
DUO 1700/200 Thermal store with immersed DHW tank



Main features	
Application	storage of thermal energy for DHW and space heating
Description	combination Thermal Store with immersed DHW tank
Working fluid	water, water / glycol mixture (max. 1:1) or water / glycerine mixture (max. 2:1) (thermal store), water (immersed DHW tank)
Code	
Thermal store	14 213
Insulation	16 291
Energy Efficiency Data (as per EC Regulation No. 812/2013)	
	DUO 1700/200 with insulation
Energy efficiency class	N/A
Standing loss	174 W
Storage volume	1682 l
Technical data	
Total volume	1682 l
Fluid volume in thermal store	1492 l
Immersed DHW tank volume	190 l
Max. working temp. in thermal store	95 °C
Max. working temp. in DHW tank	95 °C
Max. working pressure in thermal store	3 bar
Max. working pressure in DHW tank	6 bar
Materials	
Thermal store material	S235JR
DHW tank material	DC01EK
Insulation materials	
Tank perimeter insulation	fleece
Perimeter insulation's outer surface	PU leather
Top and bottom tank insulation	fleece
Dimensions, tipping height, insulation thickness, weight	
Tank diameter	1100 mm
Tank diameter with insulation	1300 mm
Tank overall height	2075 mm
Tipping height without insulation	2190 mm
Tank perimeter insulation thickness	100 mm
Bottom insulation thickness	50 mm
Top insulations thickness	120 mm
Empty weight without insulation	217 kg
Accessories	
El. heating elements	models ETT-C, L, M
Heating elements max. lenght / output	3 x 1050 mm / 3 x 12 kW
Pump station	solar, S1 and S2 models
Plate heat exchangers	kits with DV and accessories for connection to a solar pump station
Electronic anode rod	code 13 793
Expansion vessel (drinking water)	model HW 8 l and bigger
Spare parts	
Magnesium anode rod	code 13 959

DUO 1700/200 Thermal store with immersed DHW tank

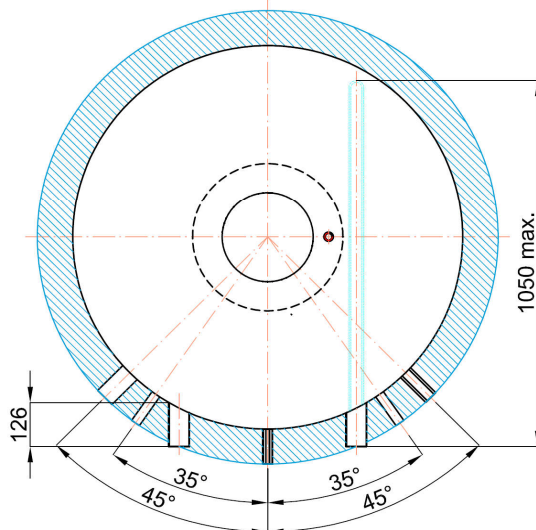
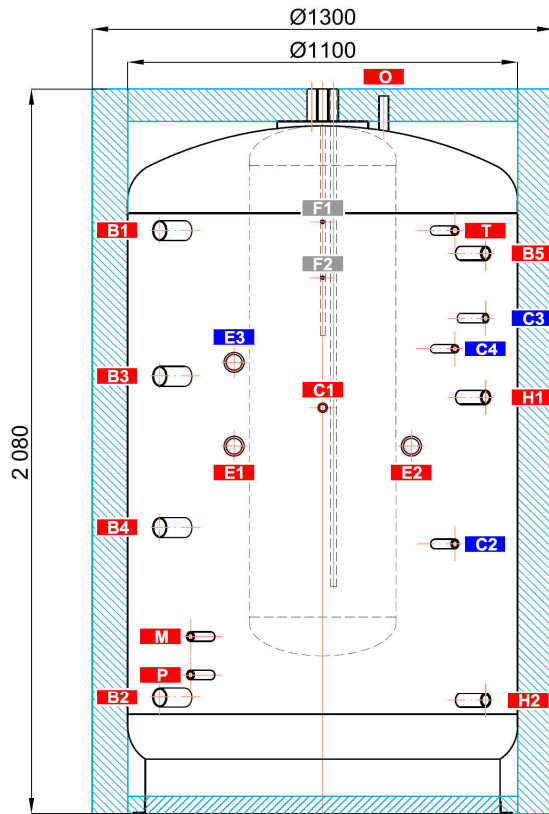
Volume of supplied DHW (heated from 10 °C to 40 °C)									
Heated volume	entire			entire			entire		
Temperature in tank	60 °C			60 °C			80 °C		
Backup heater	10 kW			none			none		
Flow rate [l/min]	8	12	20	8	12	20	8	12	20
Hot water volume [l]	1214	552	348	762	424	323	1572	1200	744



DUO 1700/200 Thermal store with immersed DHW tank

Dimensions

Tipping height without insulation 2190 mm.



TAPPINGS

pos.	connection	height [mm]
Heat sources		
B1	G 6/4" F	1675
B2	G 6/4" F	335
B3	G 6/4" F	1255
B4	G 1" F	820
B5	G 1" F	1610
Heating system		
H1	G 1" F	1195
H2	G 1" F	325
Electric immersion heaters		
E1	G 6/4" F	1055
E2	G 6/4" F	1055
E3	G 6/4" F	1295
DHW heating		
W1	G 3/4" M	2080
W2	G 3/4" M	2080
W3	G 3/4" M	2080
N	G 3/4" F	1980
Control and safety		
C1	G 1/2" F	1165
C2	G 1/2" F	775
C3	G 1/2" F	1425
C4	G 1/2" F	1335
C5	Ø 10,5 mm	2080
T	G 1/2" F	1675
M	G 1/2" F	510
P	G 1/2" F	400
Air release		
O	G 1/2" F	2060
Pump station support		
F1	M 6	1700
F2	M 6	1540

UPPER FLANGE DETAIL

