

R0BC 2500 Hot Water Storage Tank

v1.2.1_03/2017



Main features	
Application	DHW heating
Description	hot water storage tank, permitting installation of an el. heating element
Working fluid	water
Code	10 501

Energy Efficiency Data (as per EC Regulation No. 813/2013)	
	R0BC 2500
Energy efficiency class	N/A
Standing loss	330 W
Storage volume	2508 l

Technical data	
Total tank volume	2508 l
Max. working temperature in tank	95 °C
Max. working pressure in tank	10 bar

Materials	
Tank material	S235JR, inner surface enamelled (DIN 4756)
Tank perimeter insulation	PU foam (soft)
Insulation's outer surface	plastic

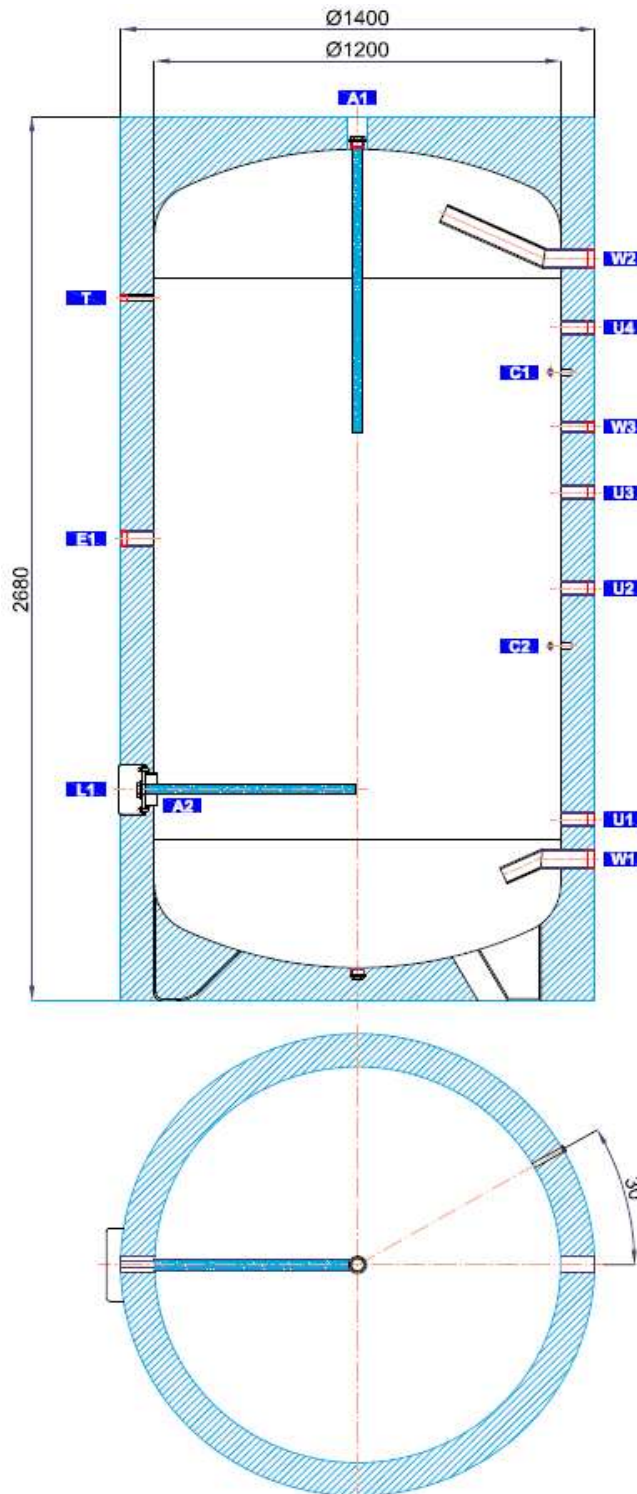
Dimensions, Tipping height, Weight	
Tank diameter	1200 mm
Tank diameter with insulation	1400 mm
Tank overall height	2680 mm
Tipping height	3030 mm
Empty weight	325 kg

Accessories	
El. heating element	models ETT-A, D, F, G, M
Heating elem. max. length / output	815 mm / 12,0 kW
Electronic anode rod	code 14 429

Spare parts (magnesium anode rods)	
Mg anode r. (A1), G 5/4"	code 3 698
Mg anode r. - chain type, G 5/4"	code 13 112
Mg anode r. - into flange (A2), G 5/4"	code 464

Dimensions

Tipping height 3030 mm.



TAPPINGS

pos.	connection	height [mm]
DHW heating		
W1	G 2" F	430
W2	G 2" F	2250
W3	G 1" F	1740
El. heating elements		
E1	G 6/4" F	1400
Control and safety		
C1	G 1/2" F	1905
C2	G 1/2" F	1075
T	G 1/2" F	2130
Universal inlet / outlet		
U1	G 5/4" F	550
U2	G 5/4" F	1250
U3	G 5/4" F	1540
U4	G 5/4" F	2040
Flange		
L1	8 x M10	640
Magnesium anode rod		
A1	G 5/4" F	2600
A2	G 5/4" F	640