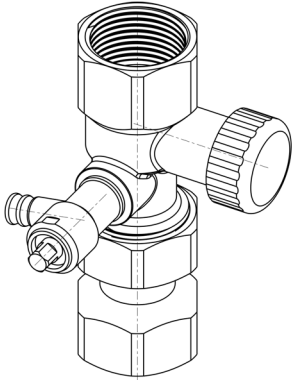


## Valves for Connecting an Expansion Vessel and Easy Servicing

**Shut-off valves with drain valve**

**Main Features**

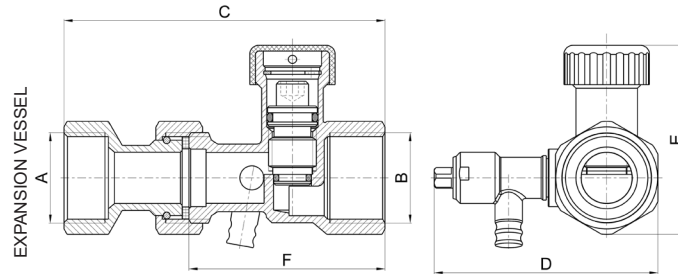
Description	Shut-off valve with manual control.
Working fluid	Drinking water; water/glycol (max. 1:1) or water/glycerine (max. 2:1).
Installation	Any position.

**Technical Data**

Max. working pressure	10 bar
Max. fluid working temperature	110 °C
Ambient working temperature	5 °C to 40 °C
Max. pressure difference	10 bar

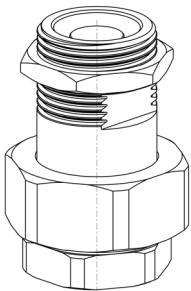
**Materials**

Valve housing, spindle	CW617N
O-rings	EPDM, FPM
Seal	PTFE

**Dimensions**


Code	Expansion vessel connection A	Connection B	C [mm]	D [mm]	E [mm]	F [mm]	m [kg]
8770	G 3/4" F	G 3/4" F	95	66	56	58	0.3
12295	G 1" F	G 1" F	100	71	61	63	0.4
14492	G 6/4" F*)	G 1" F	132*)	71	61	63	0.6*)

\*) Incl. enclosed adaptor G 6/4" F x G 1" M.

**Valve w. double non-return valve for expansion vessel bracket**

**Main Features**

Description	Valve with double automatic non-return valve.
Working fluid	Drinking water; water/glycol (max. 1:1) or water/glycerine (max. 2:1).
Installation	Any position.
Code	<b>19722</b> , the valve is also part of the expansion vessel bracket, code <b>7766</b> .

**Technical Data**

Max. working pressure	10 bar
Max. fluid working temperature	110 °C
Ambient working temperature	5 °C to 40 °C
Max. pressure difference	10 bar
Weight	0.3 kg

**Materials**

Valve housing, spindle	CW617N
O-rings	EPDM, FPM

**Dimensions**
